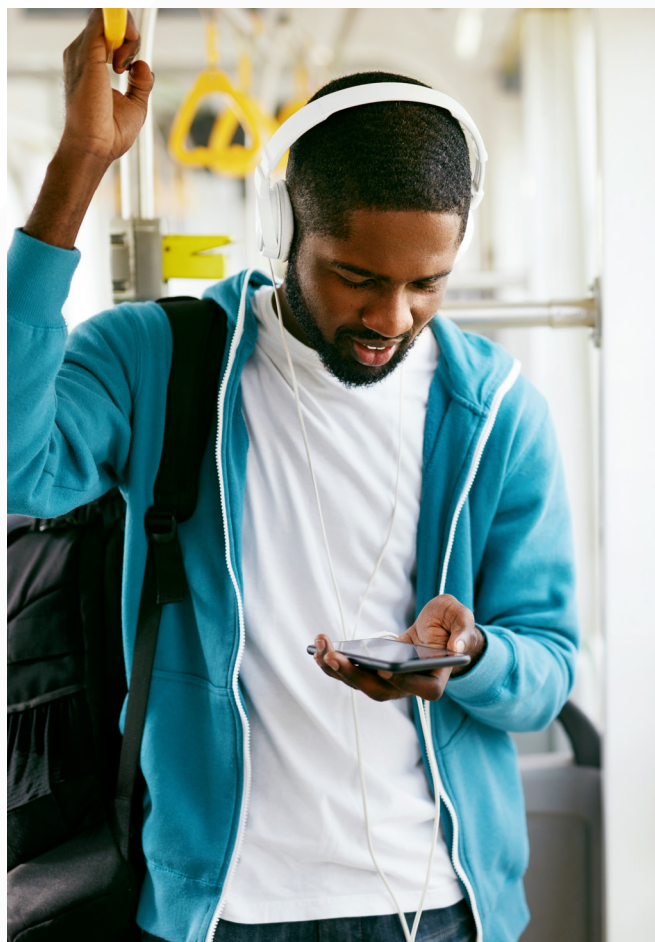


## CO-CREATING THE FUTURE OF PASSENGER RAIL

Link21 is committed to advancing equity in the Northern California Megaregion through accessible and connected passenger rail service. Through a community co-creation process, the Link21 Team is intentionally working with communities like yours who have been marginalized, to ensure your lived experience shapes key program work, helping to create a Link21 that benefits your community.



### Link21's Co-Creation Goals



Build trust and develop direct, long-lasting relationships with communities by partnering with Community-Based Organizations (CBOs)



Overcome barriers to participation for communities who have been marginalized



Work with communities like yours to better understand your needs, priorities, and values to avoid further harms and deliver needed benefits

## Co-Creation Highlights

In 2021, the Link21 Team hosted two rounds of community co-creation. Link21 partnered with over 30 CBOs to reach more than 500 community members through workshops, 1,500 through polls, and hundreds more through surveys.

### Timeframe

- **Round 1:** February — April 2021
- **Round 2:** August — October 2021

### Platform/Forum

- **Zoom workshops:** Two-hour workshops with small group discussions and accessibility accommodations provided
- **Survey:** Some community members participated through a survey in Round 2

### Participation

- **Round 1:** 20 CBO co-hosts and more than 350 community members
- **Round 2:** More than 20 CBO co-hosts, and more than 300 community members

### Accessibility

- Language interpretation and translation
- Closed captioning
- Phone-only users
- Mailed hard copy of materials
- Others as requested by participants

## Future Participation

- **Round 3:** The third round of community co-creation is planned for late spring/summer 2022.

### Community Members Reached

**500+**

THROUGH  
WORKSHOPS



**1,500**

THROUGH  
POLLS



**100+**

THROUGH  
SURVEYS



For more information,  
visit [Link21Program.org](https://Link21Program.org).



SCAN ME

Link21 is sponsored by the San Francisco Bay Area Rapid Transit District (BART) and the Capitol Corridor Joint Powers Authority (Capitol Corridor). The Program Team is also working closely with our Northern California rail partners and the state of California to ensure an integrated rail program. For more information visit [Link21Program.org](https://Link21Program.org).



## Summary

# CO-CREATION ROUND 1

February - April 2021

## What We Asked You

The co-creation workshops focused on better understanding what current and desired trips are most important. Participants were also asked about changes in their communities over the past 50 years, their hopes for the future, and their top priorities for Link 21.

## What We Heard from You

The Link21 Team analyzed community feedback to understand specific concerns across the Megaregion. Key ideas we heard from the community are:

- Participants overall expressed support for the goals and objectives, particularly Transform the Passenger Experience and Enhance Community and Livability.
- The communities also showed interest in longer service hours, faster trips, less air pollution, more stations nearby, additional community resources, more meaningful involvement of community members in decision-making, and station access improvements.
- Many people wanted to be able to use rail for all types of trips, not just

work commutes. The Link21 Team is considering this, as well as service preferences like the ones mentioned above, as we start to think through what improvements could meet community needs.

- Participants expressed important concerns about the potential impacts of Link21. Notable themes included how Link21 could affect housing costs, the high cost of riding transit, lack of safety on transit and in the community, and whether communities that have been marginalized would actually be able to benefit.



**Key changes to Link21's  
vision, goals, and objectives  
based on this feedback include:**



Elevating equity from an objective to a goal to reflect its importance across all Link21 work



Emphasizing that economic equity isn't just about growth, it means expanding access to economic opportunities



Adding language about community stability and equitable land use to reflect that displacement is currently impacting community members and that the Program needs to address the potential risk of displacing more residents



Emphasizing the need for Link21 to make improvements that benefit all types of travelers, including those with no or limited access to a car



Acknowledging that making rail travel more affordable is a priority for a more equitable transit system

Other top priorities voiced by the community, like safety, cleanliness, and accessibility were recognized as essential but have not been added to the proposed goals and objectives revision. Link21 is a long-term program, but these issues require attention now.

- The Link21 Team is working with others at Bay Area Rapid Transit (BART), Capitol Corridor Joint Powers Authority (CCJPA), and our partner agencies to make sure that these issues are being responded to today. Link21 will keep these priorities top of mind in our longer-term work.
- Other priorities, like increased comfort on-board trains, were not added now because the Program is not yet in the design phase, but they will be considered later in the process.

**For more information,  
visit [Link21Program.org](https://Link21Program.org).**



SCAN ME

Link21 is sponsored by the San Francisco Bay Area Rapid Transit District (BART) and the Capitol Corridor Joint Powers Authority (Capitol Corridor). The Program Team is also working closely with our Northern California rail partners and the state of California to ensure an integrated rail program. For more information visit [Link21Program.org](https://Link21Program.org).



## Summary

## CO-CREATION ROUND 2

August - October 2021

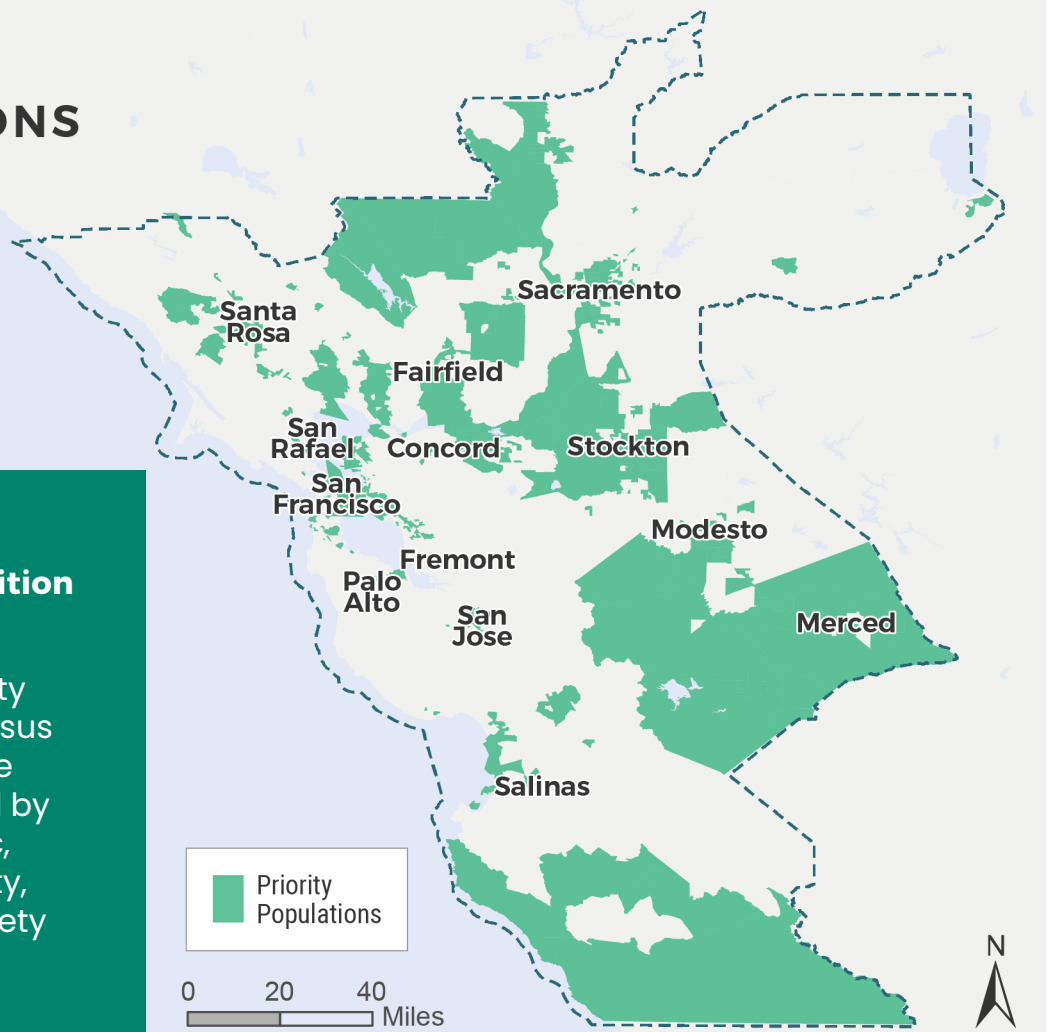
## What We Asked You

The Link21 Team partnered with community members to better understand what burdens impact communities today, which potential Link21 outcomes matter most to them, and to gain a shared understanding of what more equitable transportation means. Input from the workshops was primarily intended to inform what burdens were included in Link21's updated priority populations definition and how those burdens were weighted.

## PRIORITY POPULATIONS

### Updated Priority Populations Definition DECEMBER 2021

Link21 defines priority populations as census tracts where people are most impacted by negative economic, mobility, community, and health and safety outcomes.



Many priority populations are in urban areas, where census tracts are smaller. Those may be difficult to see on this map.



## What We Heard from You

Based on feedback from Round 2 (and to some extent from Round 1) of co-creation, the Link21 Team updated its priority populations definition to reflect the unique needs and composition of the Megaregion more fully. The priority populations definition is one of several tools that will be used to consider equity throughout all aspects of Link21. The definition is intended to capture the most impacted communities in the Megaregion and is directly informed by input from co-creation participants on the burdens facing their communities. Many of the most frequently mentioned burdens, like lack of affordable housing, lack of access to transit, educational barriers, unemployment, lack of medical services, transportation costs and wages, are included in the updated definition. For more information on what is included in the definition, please see the separate [Priority Populations fact sheet](#).

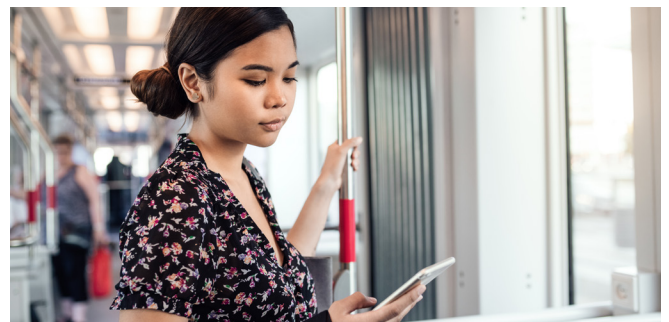
Participants raised many different types of burdens, but not all of them could be added to the updated definition because there is not currently data that measures or tracks their concerns. Below are some of the burdens that could not be included in this update. The Link21 Team will continue looking into these burdens for future updates.

- Being unhoused
- Low credit scores
- Bad sidewalks and roads

- Vacant buildings
- Public safety
- Lack of political representation
- Bad street lighting
- Enrollment in assistance programs

Input from Round 2 also informed proposed updates to Link21's Equity Vision Statement and Commitment. Updates include a more intentional focus on understanding the needs and barriers to access to opportunities for communities who have been marginalized, providing equitable transportation for everyone to get to where they want to go, and co-creating Link21 using community members' knowledge and expertise. Download the Link 21 Equity Vision [PDF](#).

Finally, in Round 2 the Link21 Team learned that community members particularly value affordable rail travel, affordable housing close to transit, and improving access to places beyond work.



**For more information,  
visit [Link21Program.org](https://Link21Program.org)**



SCAN ME

Link21 is sponsored by the San Francisco Bay Area Rapid Transit District (BART) and the Capitol Corridor Joint Powers Authority (Capitol Corridor). The Program Team is also working closely with our Northern California rail partners and the state of California to ensure an integrated rail program. For more information visit [Link21Program.org](https://Link21Program.org).

