



CONNECT NORTHERN CALIFORNIA

# Improving Passenger Rail Service to Better Serve Your Community

Co-Creation Workshop

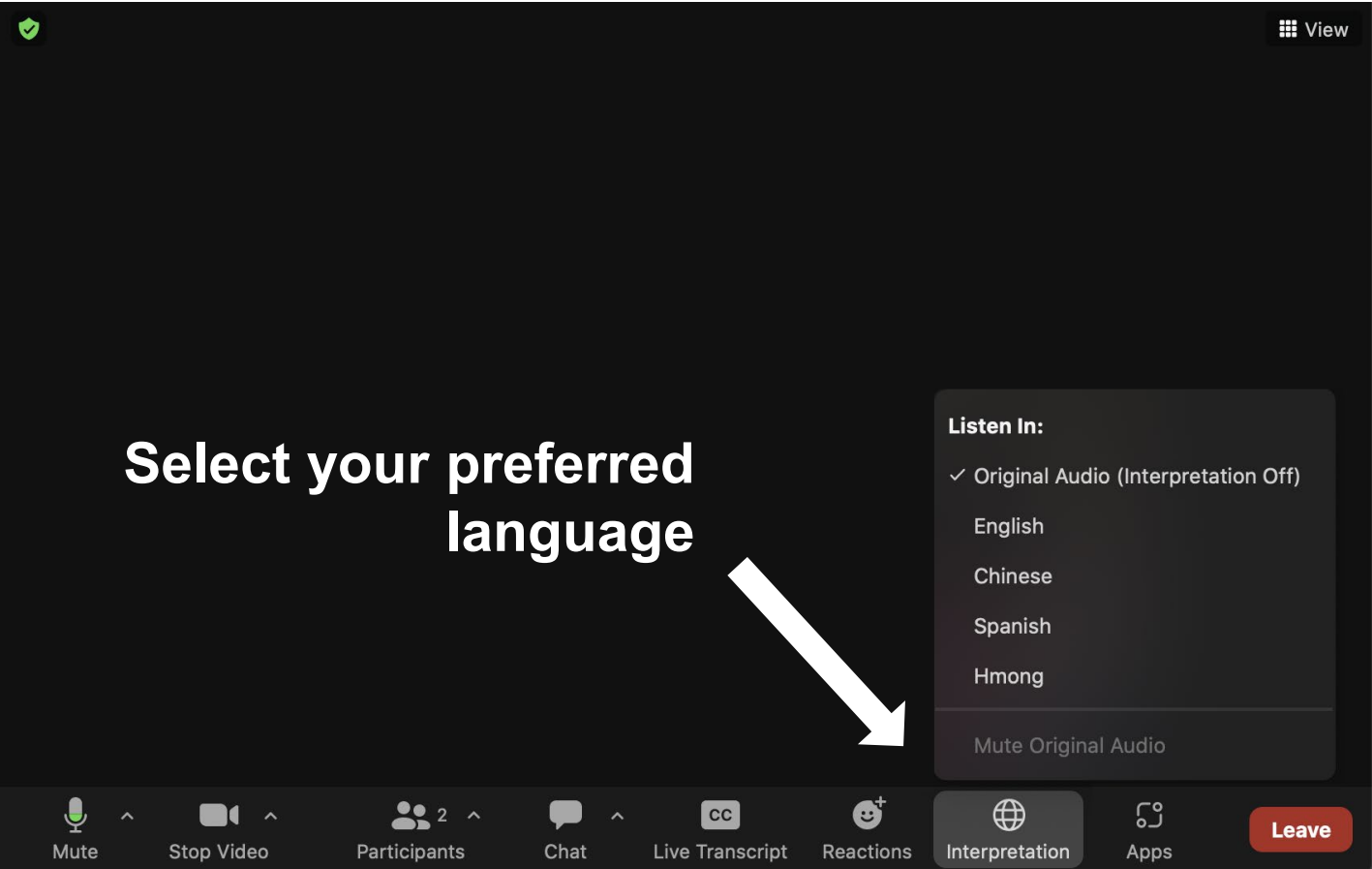
*June and July 2022*



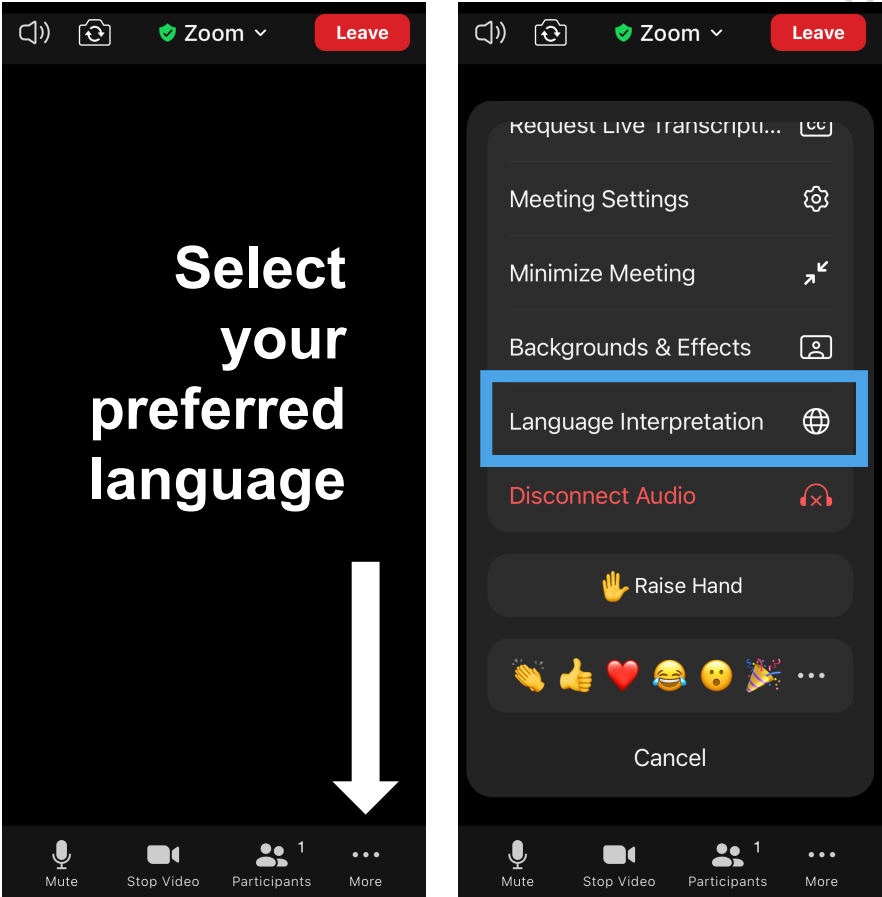


# Using Zoom

## Computer



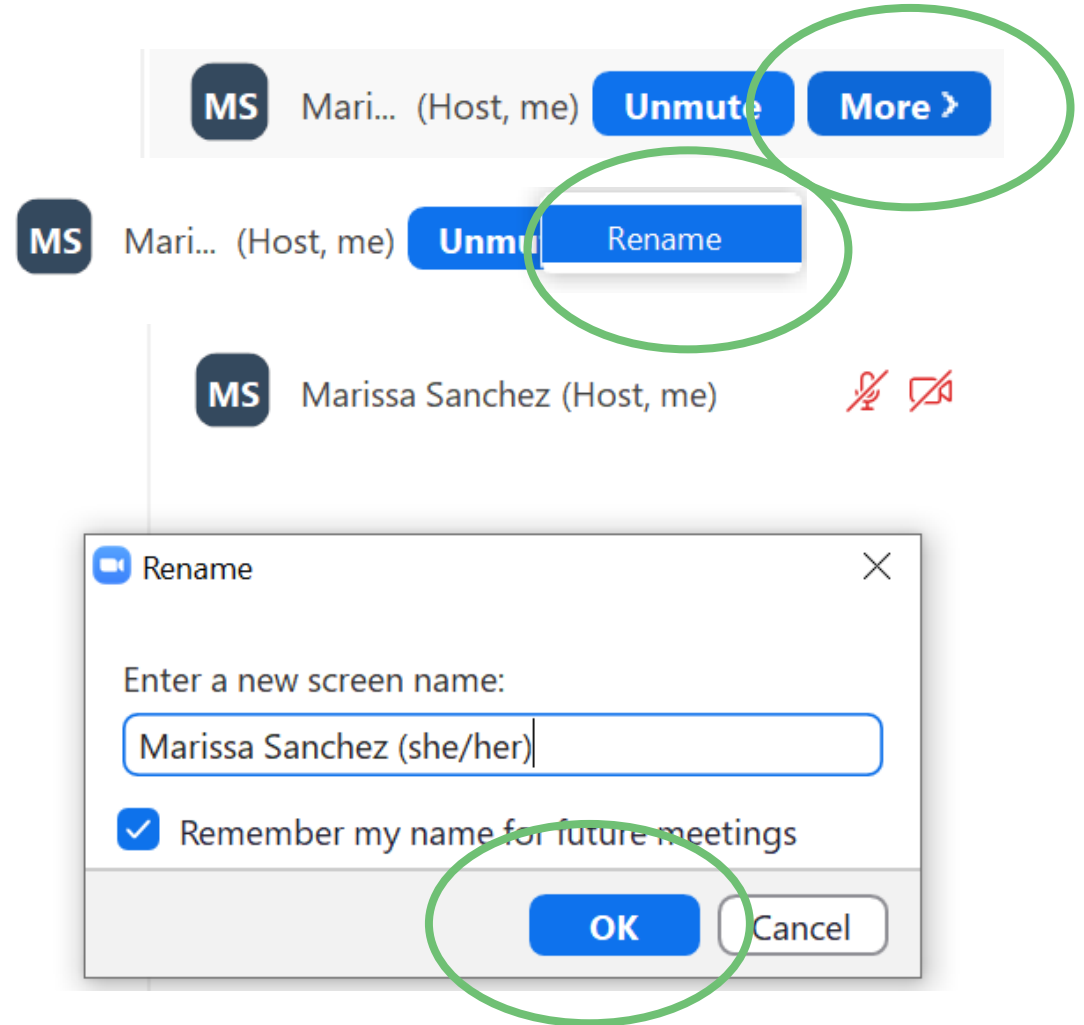
## Smartphone





# Using Zoom

- Update your name and pronouns (if desired)
- Stay muted when you are not speaking



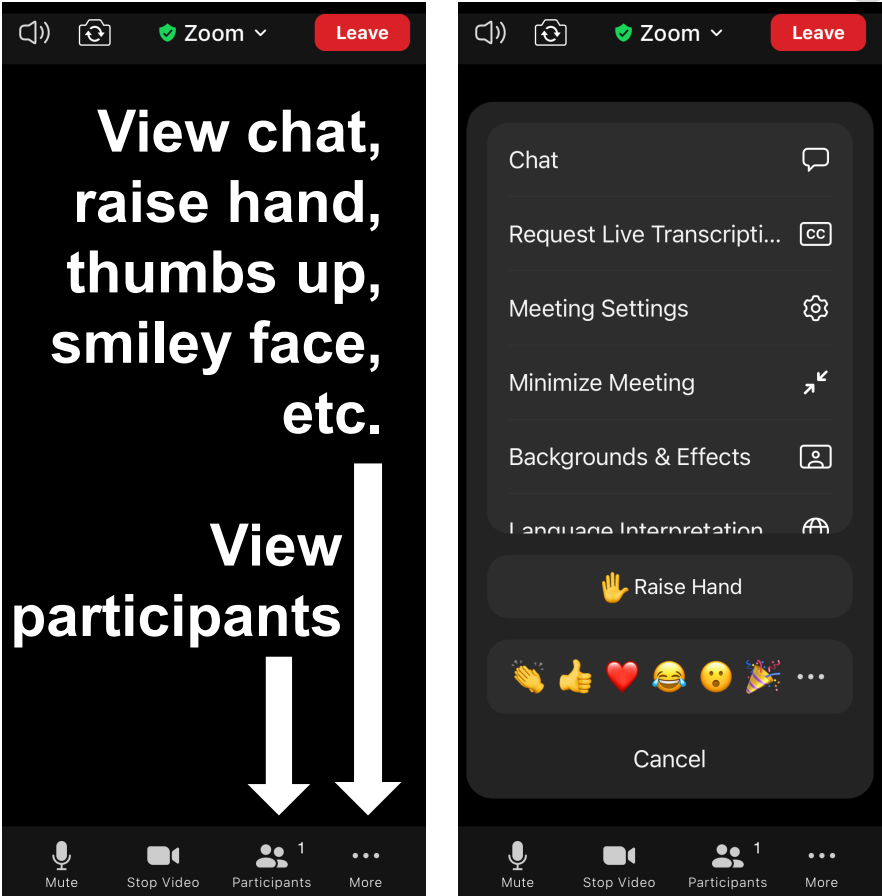


# Using Zoom

## Computer



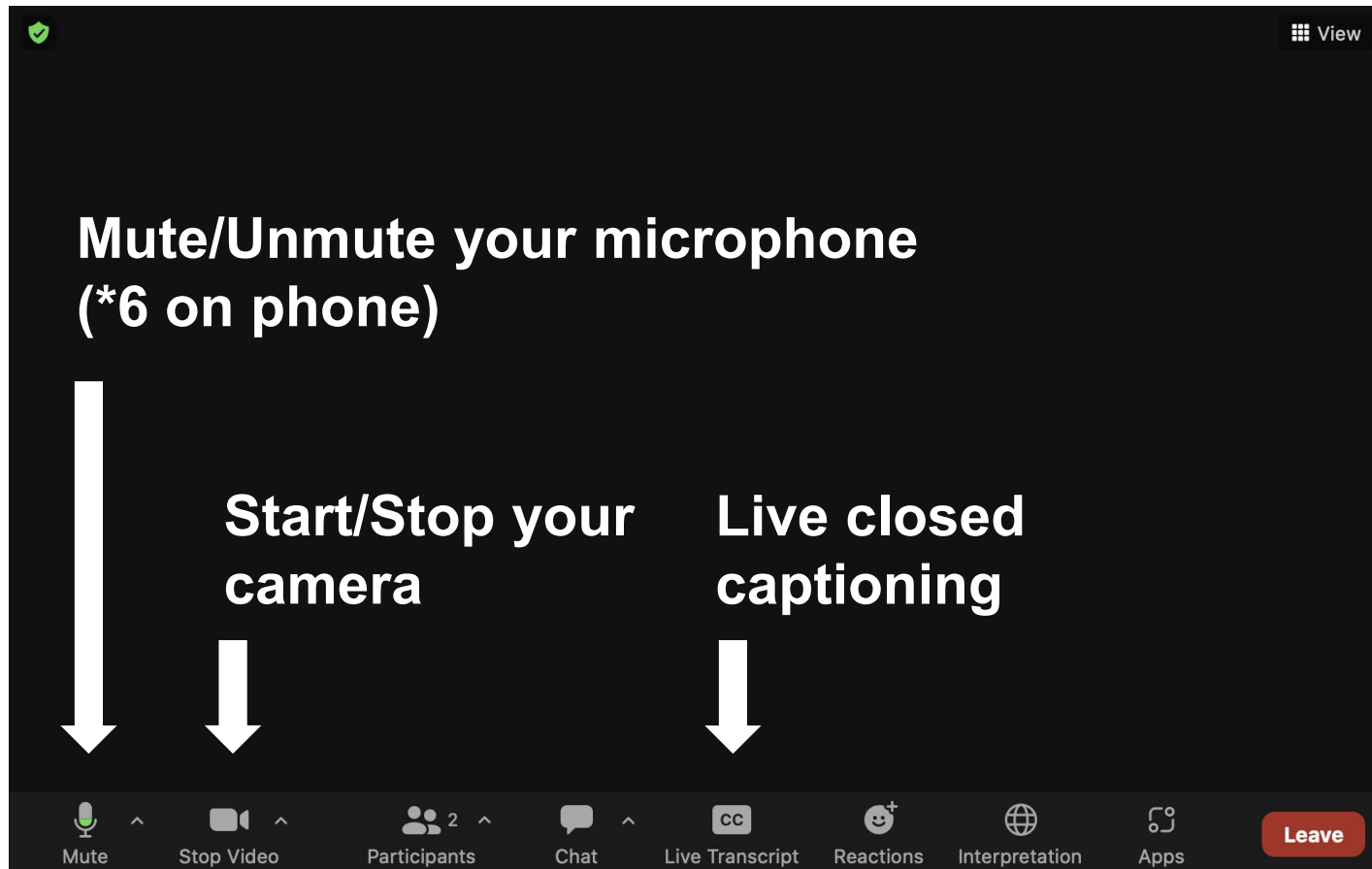
## Smartphone



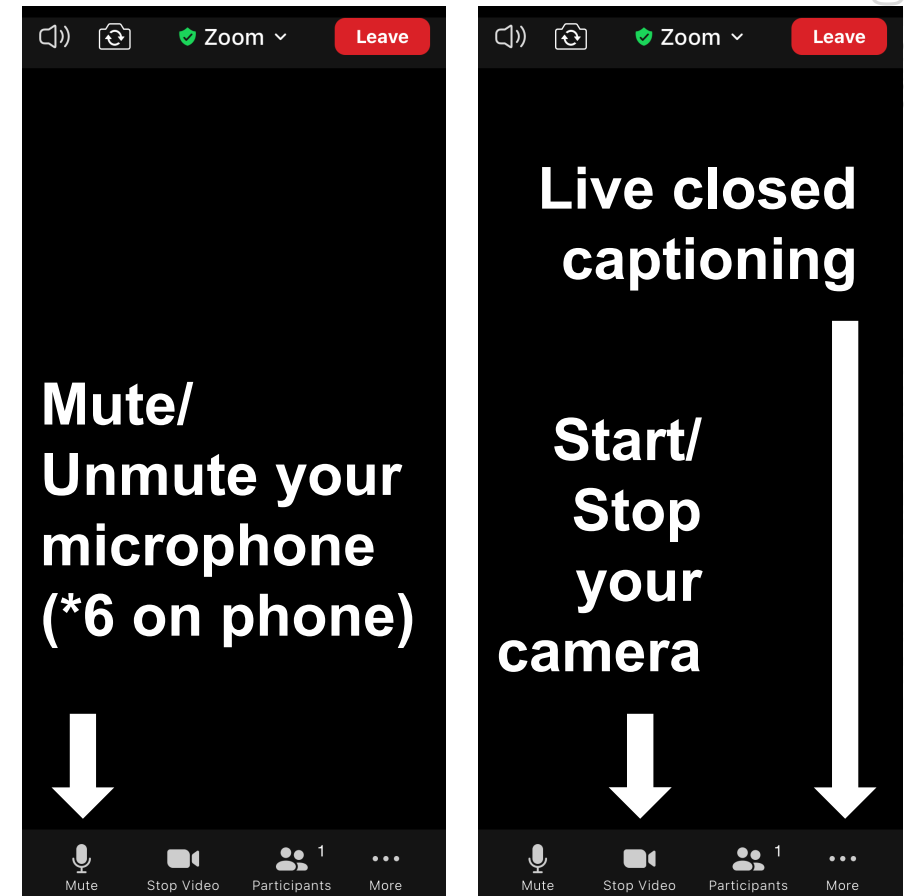


# Using Zoom

## Computer



## Smartphone







# Welcome & Introductions



# Workshop Objectives

- Identify **problems/challenges** with using or getting to passenger rail in your community
- Identify **potential solutions** to these problems that passenger rail could address
- Explain how **community ideas** will be used in the development of Link21



# Agenda



---

**Welcome  
& Introductions**  
(10 mins)



---

**Link21  
Background,  
Q&A**  
(15 mins)



---

**Discussion in  
Breakout Rooms**  
(80 mins)



---

**Summary,  
Next Steps &  
Thank You**  
(15 mins)



# Group Agreements

- Participate and share the time
- Speak from your own experience
- Assume good intentions
- No one knows everything, together we know a lot
- Respect privacy: stories stay, lessons leave
- Let the facilitator guide the process



# Poll: Who's Here?



- How much do you know about Link21?
- Have you attended previous co-creation workshops or other Link21 engagement events?





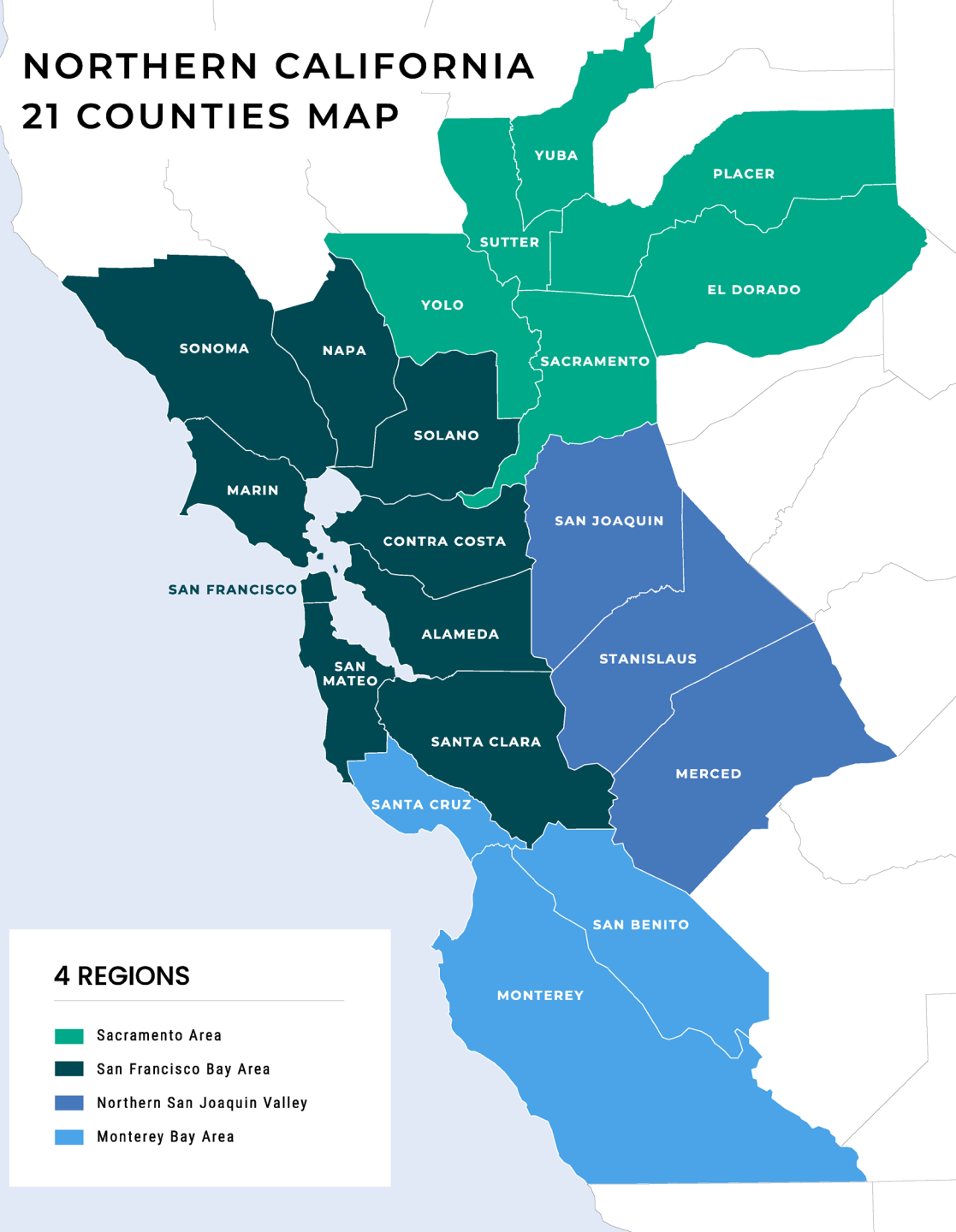
# Link21 Background



# What is Link21?

- Link21 and its partners seek to transform the passenger rail network in the Northern California Megaregion into a **faster, more connected system**.
- The goal is to provide **safe, well-run, equitable**, and **affordable** travel for all types of trips.

## NORTHERN CALIFORNIA 21 COUNTIES MAP



### 4 REGIONS

- Sacramento Area
- San Francisco Bay Area
- Northern San Joaquin Valley
- Monterey Bay Area



# What is Passenger Rail?

Passenger rail refers to a train that is designed to carry people.

Examples of passenger rail in Northern California are:

- BART
- Capitol Corridor
- ACE
- Amtrak
- Caltrain
- San Joaquins
- SMART





# What is Passenger Rail?



What passenger rail  
service do you use the  
most?





# Northern California's Passenger Rail Network

*Existing & Planned*

*Adapted from California State Rail Plan, 2018*

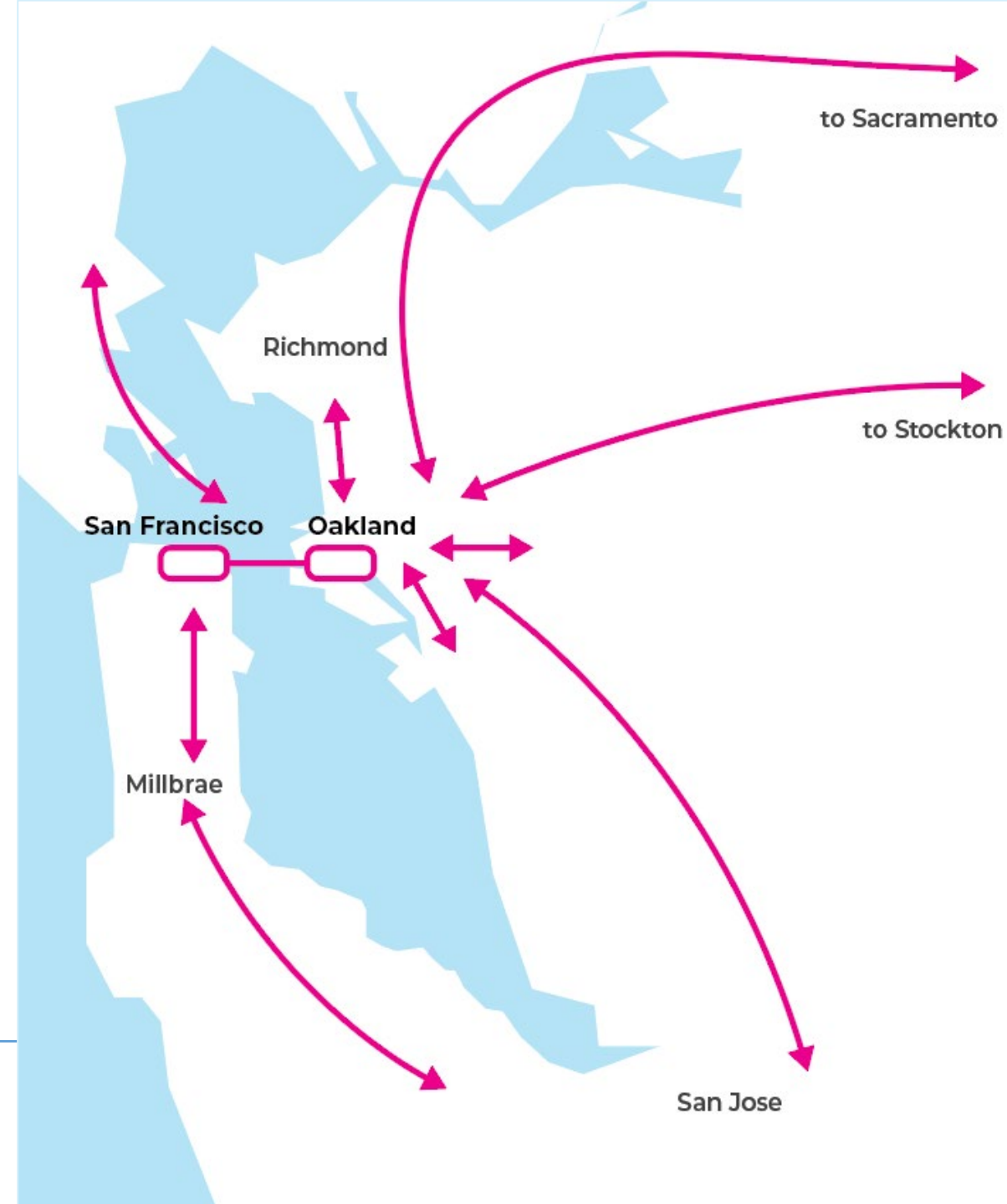




# Link21 Includes

- **A new transbay passenger rail crossing** between Oakland and San Francisco
- **Improvements** for BART, Capitol Corridor, and the greater passenger rail network

*New transbay passenger rail crossing and improvements for the greater passenger rail network.*





# Link21 Goals and Objectives

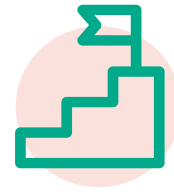


## Transform the Passenger Experience

- Provide better service
- Improve reliability and system performance
- Build ridership and mode share



## Promote Equity and Livability



## Support Economic Opportunity And Global Competitiveness

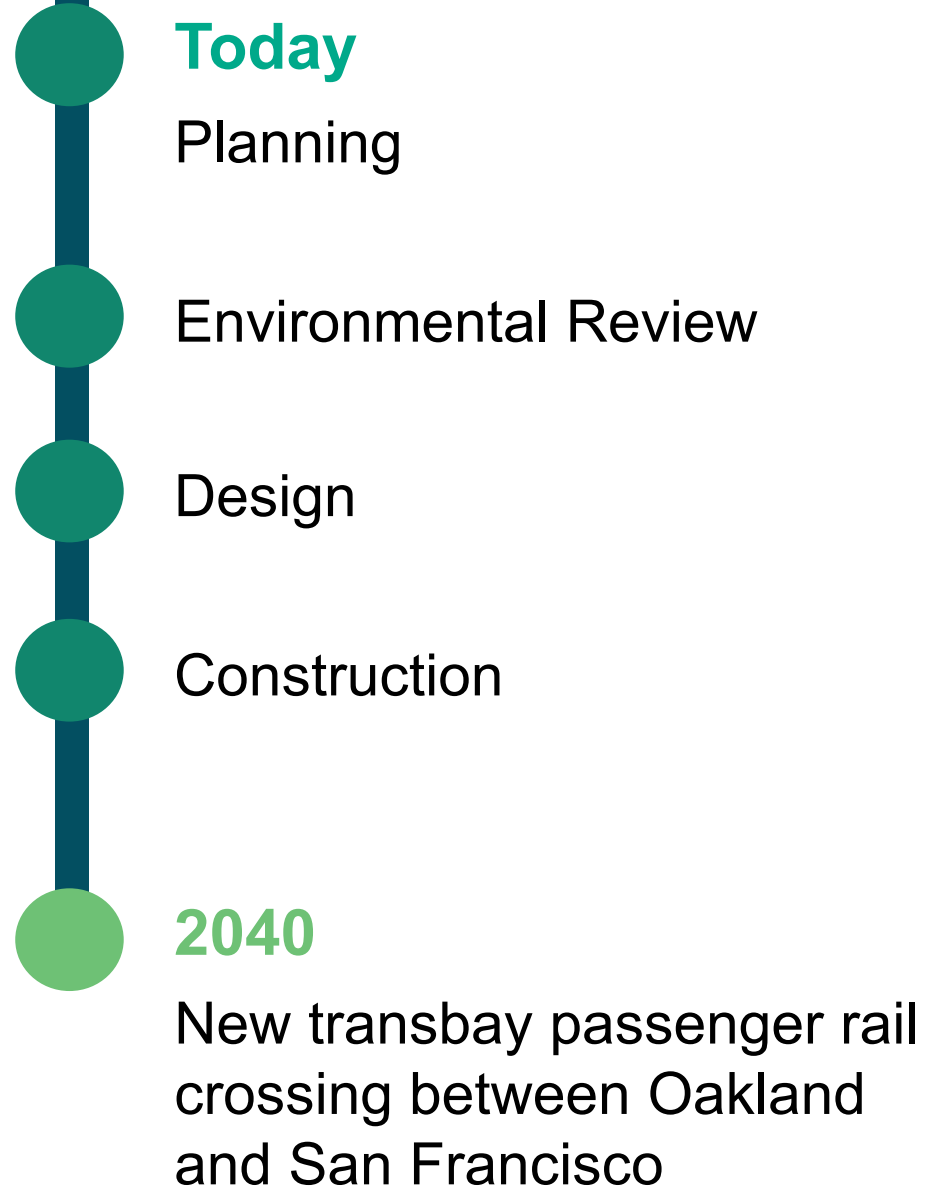


## Advance Environmental Stewardship and Protection



# Link21 is a Long-term Effort

Community participation and ideas  
are especially important now





# Link21 is Using a Co-Creation Approach

- Working together with communities to design the program
- Focusing on communities that have been marginalized
- Partnering with community-based organizations



# How 2021 Co-Creation Activities Shaped Link21

- Two rounds of workshops
- One survey
- 30 community-based organizations
- Over 500 community members

## Updated Link21 Goals and Objectives

- Made equity a specific objective
- Focused on benefits for all types of trips
- Focused on access to economic opportunity and preventing displacement



# What We Heard So Far from Co-Creation Activities

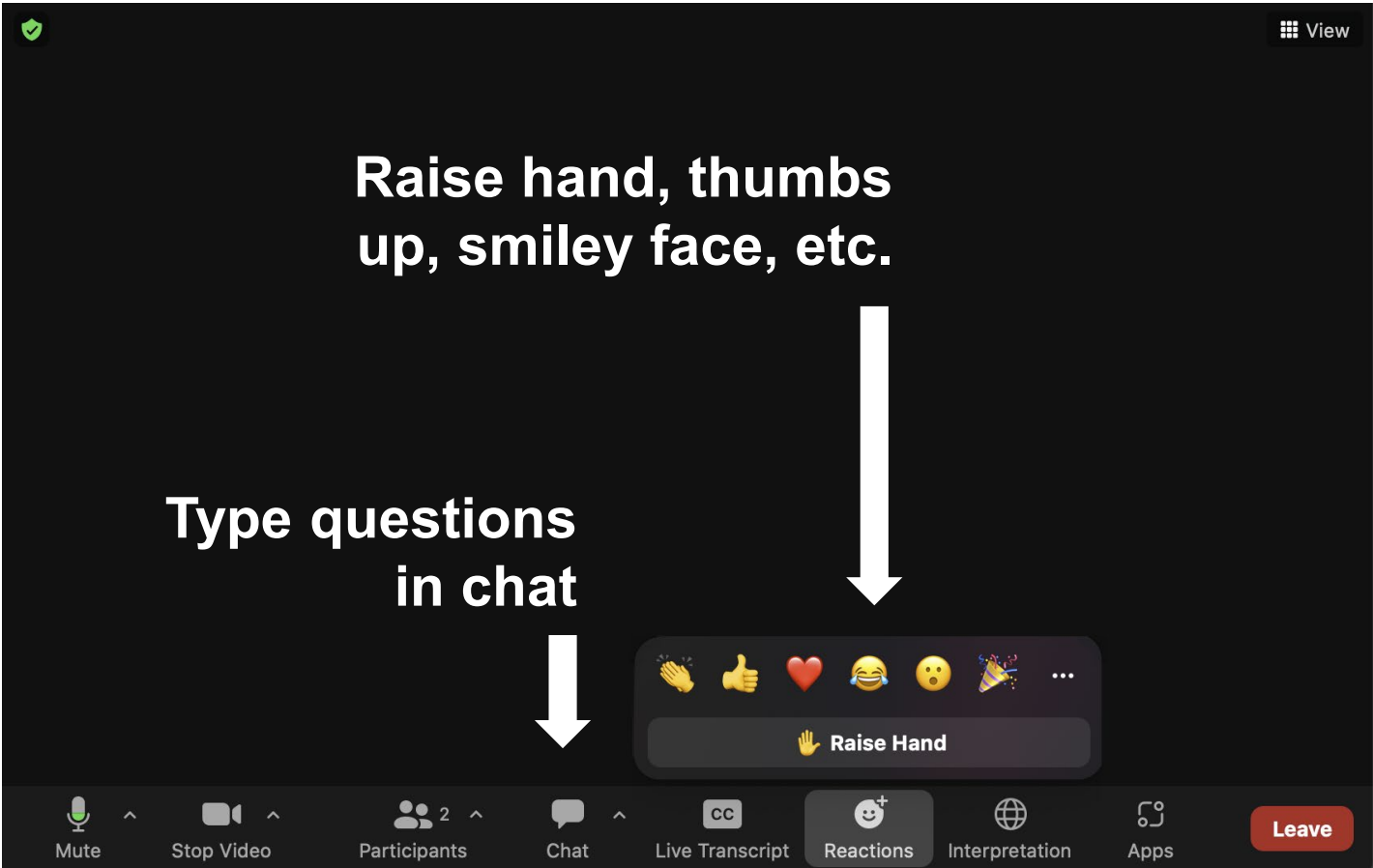
## Participants interests included

- Longer service hours
- Faster trips
- More stations nearby
- Use rail for all types of trips
- Less air pollution
- Better access to stations
- Safer travel and stations
- Improved disability access
- More affordable rail travel

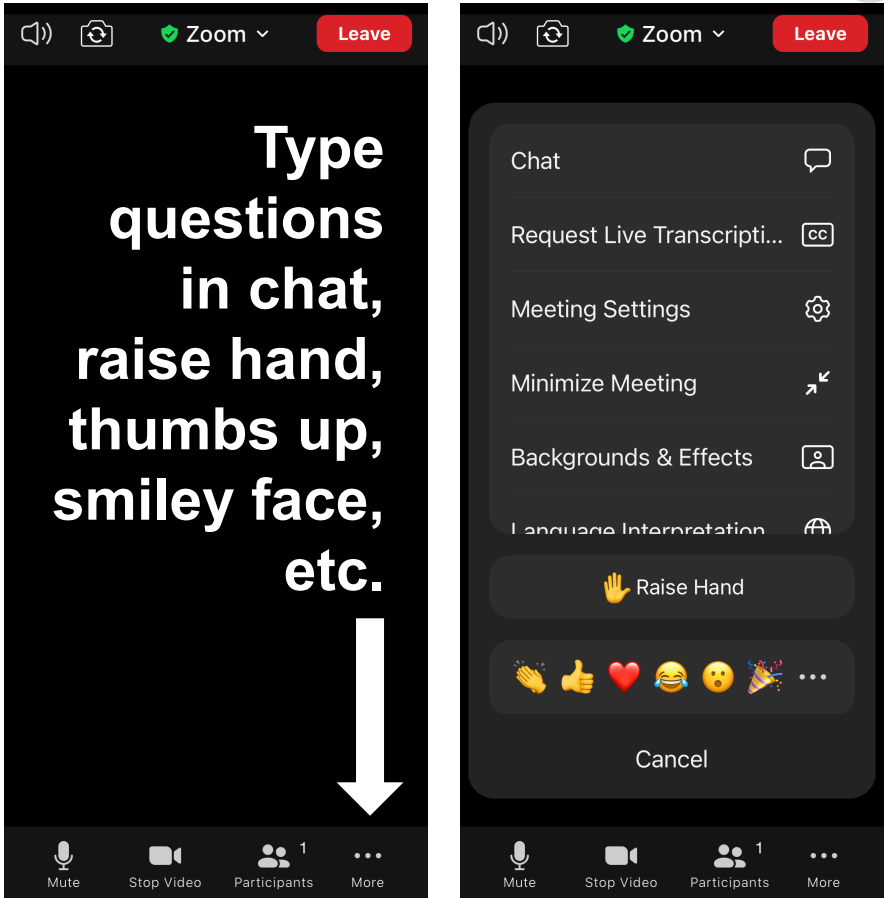


# Questions?

## Computer



## Smartphone





# Breakout Room Discussions



---

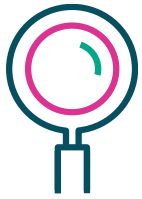
## Breakout Rooms

- Small breakout rooms (about 5 community members)
- Discussion with a facilitator and a notetaker
- Hear and discuss ideas from all community members



# Breakout Room Discussions

*What we will do:*



---

**Identify  
problems/challenges**  
with using or getting  
to passenger rail in  
your community  
(25 min)



---

**Break**  
(10 min)



---

**Identify  
potential solutions**  
to these problems that  
passenger rail could  
address  
(45 min)



# Breakout Rooms



# Breakout Room Introductions & Framing Activity



- Say your **full name**  
(so we can get you your gift card)
- Share your **pronouns** (she/he/they) if you'd like
- What is one thing you'd like to see in an improved passenger rail system?



# Reminder: Group Agreements

- Participate and share the time
- Speak from your own experience
- Assume good intentions
- No one knows everything, together we know a lot
- Respect privacy: stories stay, lessons leave
- Let the facilitator guide the process





# Activity

## Identify the Problems & Challenges



# Transportation Challenges and Problems

- What **problems** are you experiencing with passenger rail?
- What **makes it hard for you** to use passenger rail?
- What **challenges** do you experience in trying to getting to or from San Francisco and the East Bay using passenger rail?

## Be Specific

- Travel time
- Frequency of trains
- Getting to destinations
- Access to stations



# 10-Minute Break





# Activity

# Co-Creating Solutions



# Co-Creating Solutions

**For each problem, identify possible solutions:**

- What improvements to passenger rail could solve these problems?

## Be Specific

- Travel time
- Frequency of trains
- Getting to destinations
- Access to stations







# Back to Main Room



# Summary and Closing Activity



- Share reactions to the Breakout Room activities: one word about what you're thinking after the discussion (please use the chat function).
- Were there any “aha” moments in your group?
- Anything that surprised you?



# How Your Ideas Will Shape Link21

- **Review** the problems and solutions we discussed
- **Propose** ideas for improving the passenger rail system
- **Share** proposed ideas with communities for feedback in the fall
- **Send** other ideas and potential solutions to the appropriate agencies



# Next Steps: Co-Creation

## *Future Co-Creation Activities*

- **Share what we learned** from Round 3 co-creation workshops
- **Work with communities** to define potential Link21 projects including a new transbay rail crossing



# For More Information



---

For More Information  
[www.Link21Program.org](http://www.Link21Program.org)



---

Co-Creation Contact Info  
[Co-creation@link21program.org](mailto:Co-creation@link21program.org)  
for questions and comments



# Next Steps



---

## Please Fill out the Workshop Survey

See link in chat, it will also be sent by email



---

## Make Sure You Get Your Gift Card!

Confirm your contact information with the facilitator

Gift card specific questions: ask community-based organization lead



Thank You!

