

LINK21

CONNECT NORTHERN CALIFORNIA

Virtual Community Meeting

Thank you for joining us.

The meeting will begin shortly.



LINK21

CONNECT NORTHERN CALIFORNIA

Welcome! Virtual Community Meeting

October 18, 2022

5:30 – 7:00 p.m.



Meeting Details



Meeting is
being recorded

EN/SP/中文

English,
Spanish, and
Cantonese



Includes
Closed
Captioning



Technical
Support
Use chat box or
raise hand button



Getting to Know You



Ways to Participate in Polling



Computer

www.pollev.com/kwpoll1
on internet browser



Smart Phone

www.pollev.com/kwpoll1
on internet browser



Text Message

Text **kwpoll1** to **22333**
on mobile device



QR Code

Scan QR Code from
mobile device camera
to access poll



Polling

QUESTION

1

In which City or Zip Code are you located?



Polling

QUESTION

2

How did you learn about today's meeting?



Meeting Agenda & Speakers



LINK21
CONNECT NORTHERN CALIFORNIA

Connecting
people, places
and possibilities

-  RELIABLE
-  FREQUENT
-  CONNECTED
-  GOOD FOR THE ENVIRONMENT
-  GOOD FOR THE ECONOMY
-  EQUITABLE



Agenda Review

PART

1

Northern
California's
Travel Needs

PART

2

Link21
Focused on
Our Future

PART

3

Developing
Initial
Concepts

PART

4

Engagement
and Q&A



Meet Our Speakers Panel



Sadie Graham

Link21 Program
Director – BART



Camille Tsao

Link21 Program
Lead – CCJPA



Nicole Franklin

Link21 Engagement
& Outreach
Manager – BART



Greg Oslund

Link21 Delivery
Manager – HNTB



Northern California's Travel Needs **Part 1**



Northern California's Megaregion Today

Economy, Jobs & Housing:

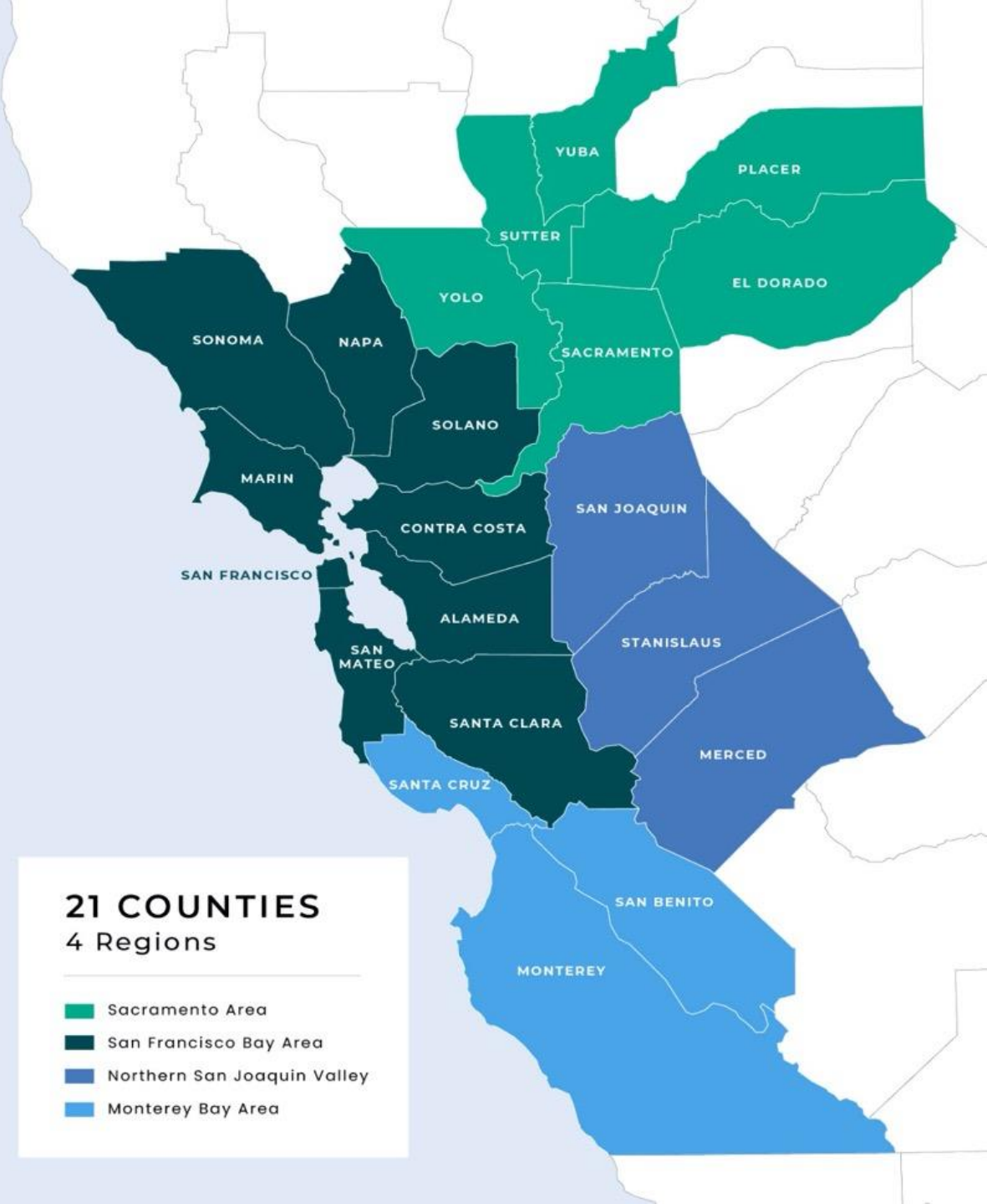
- Fifth largest megaregional economy in country
- Jobs and affordable housing imbalance

Roadway Congestion & Climate Risks:

- Persistent traffic
- Climate - and health-damaging air pollution

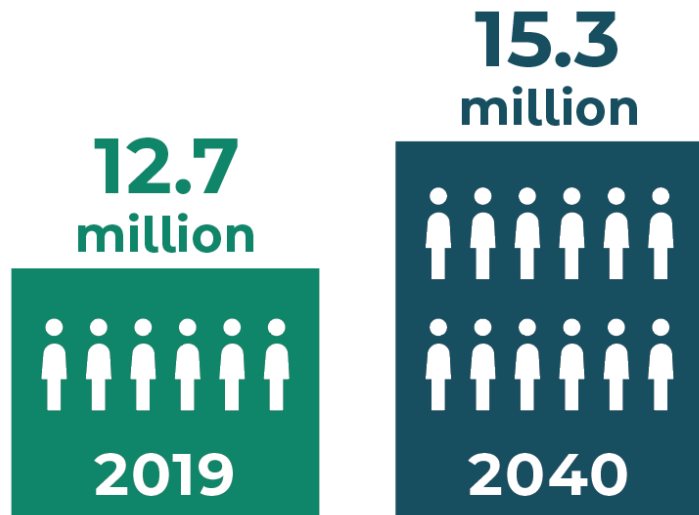
Passenger Rail Service & Infrastructure:

- Inconvenient, disconnected train network with limited routes and service
- One rail crossing of Bay (BART Transbay Tube)

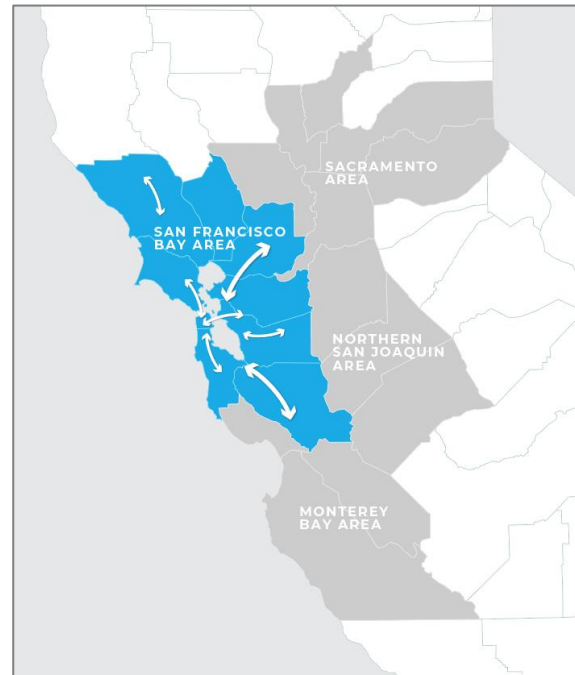


Projected Growth from 2015 to 2040

20% ↑
In population



26% ↑
In daily trips within
San Francisco Bay Area
(estimated 28 million)*











64% ↑
In daily trips between
Bay Area and other counties
(estimated 800,000)*

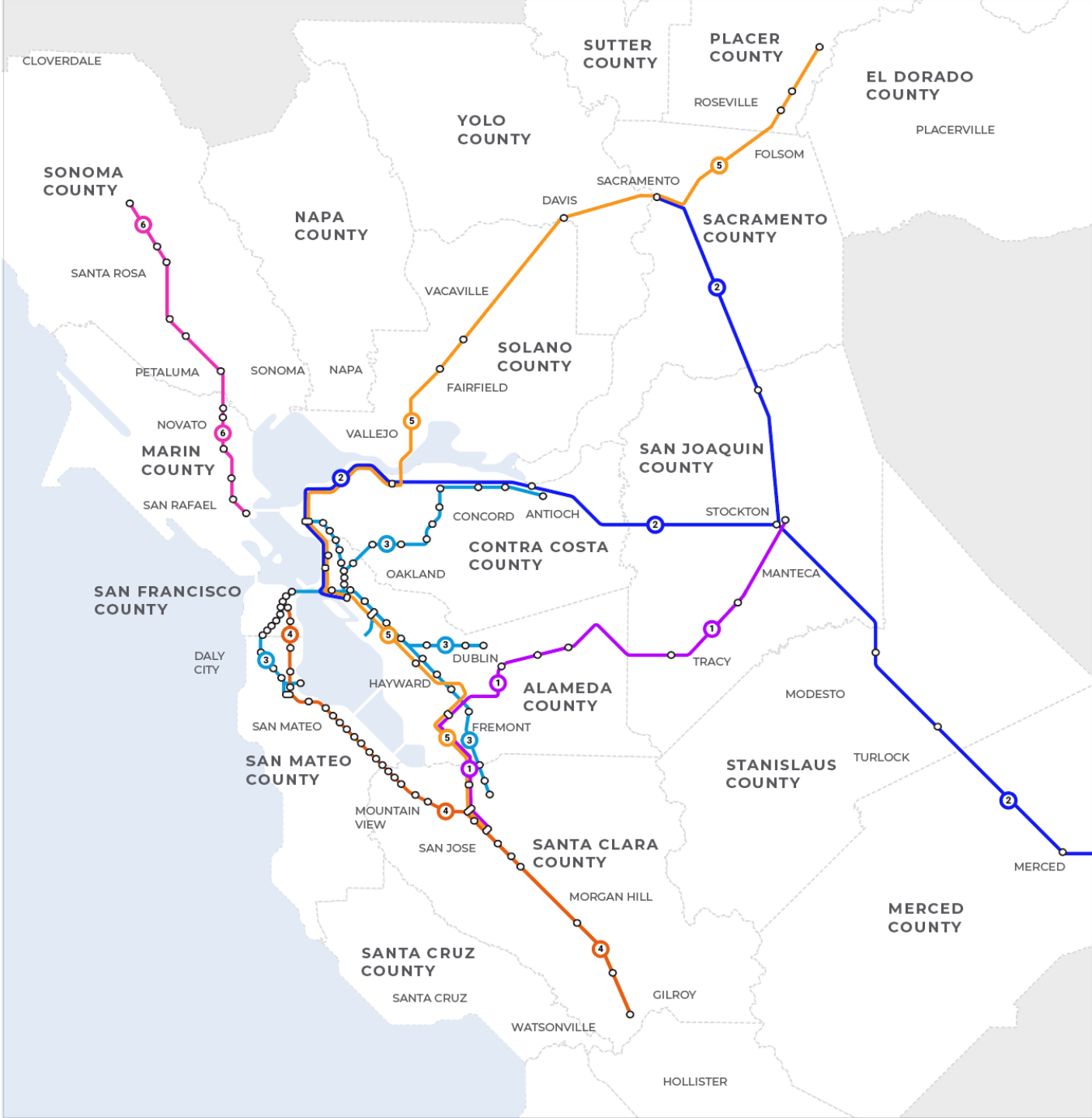


* Projected increase from 2015 to 2040



Our Train Network Today

-  Altamont Corridor (ACE)
-  Amtrak San Joaquin
-  Bay Area Rapid Transit (BART)
-  Caltrain
-  Capitol Corridor
-  Sonoma-Marín Area Rail Transit (SMART)
-  Transfer Station
-  Station

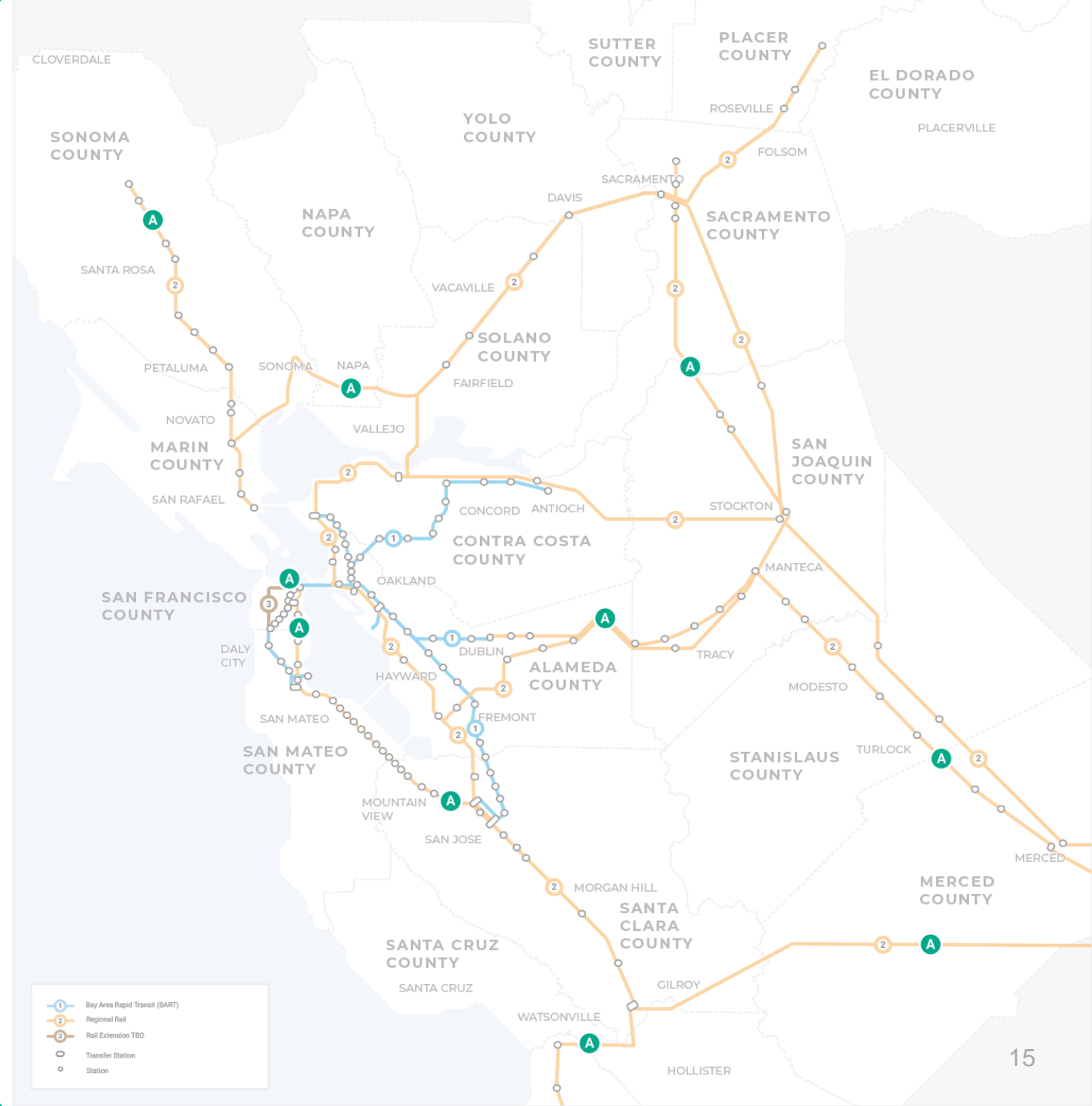


Planned & Potential Network Improvements

A

Rail Extensions:

- North Santa Rosa to Windsor
- Marin to Solano
- Stockton to Sacramento & Merced
- Lathrop to Dublin/Pleasanton
- Downtown San Francisco - 4th & King to Salesforce Transit Center
- To Western San Francisco (Geary to 19th Ave.)
- To San Jose & Santa Clara
- Monterey/Salinas to Gilroy
- Pajaro to Santa Cruz
- Dedicated tracks: Merced to Gilroy



Planned & Potential Network Improvements

A

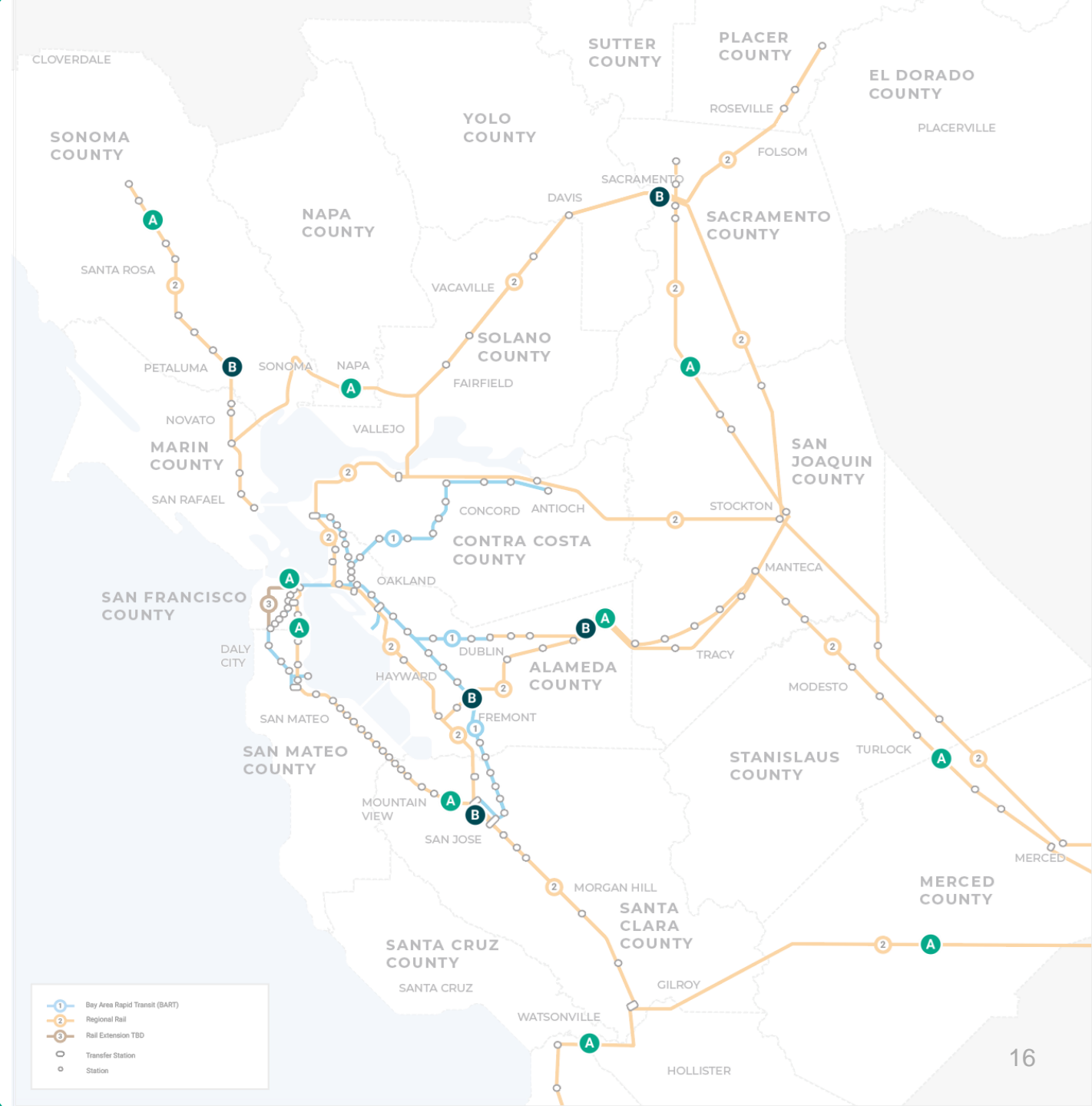
Rail Extensions:

- North Santa Rosa to Windsor
- Marin to Solano
- Stockton to Sacramento & Merced
- Lathrop to Dublin/Pleasanton
- Downtown San Francisco - 4th & King to Salesforce Transit Center
- To Western San Francisco (Geary to 19th Ave.)
- To San Jose & Santa Clara
- Monterey/Salinas to Gilroy
- Pajaro to Santa Cruz
- Dedicated tracks: Merced to Gilroy

B

New Markets & Enhanced Stations:

- North Petaluma
- New stations connecting Tri-Valley to Central Valley
- Irvington Station
- Enhanced Sacramento Valley Station, San Jose Diridon Station

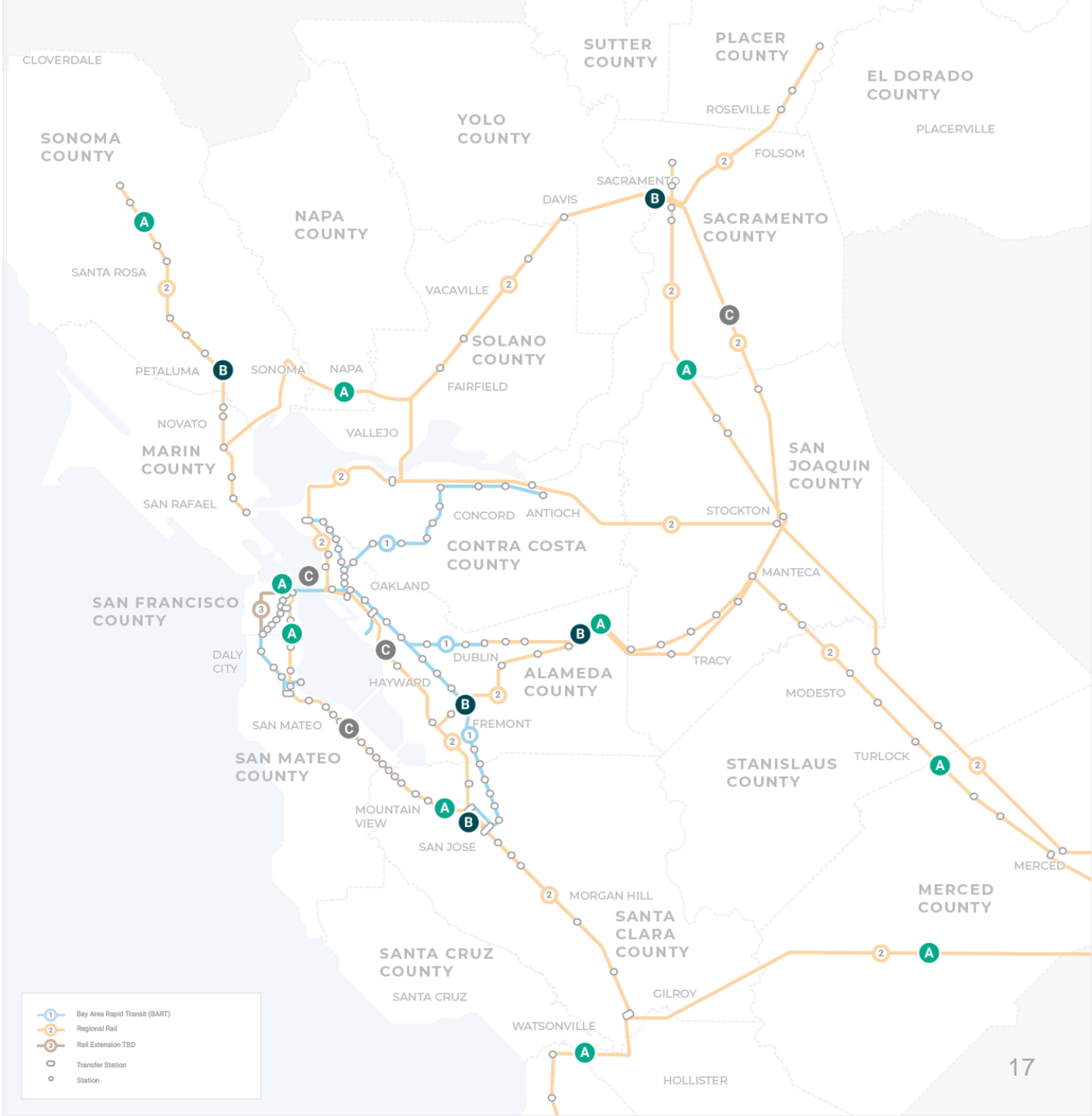


Planned & Potential Network Improvements

- A Rail Extensions:**
- North Santa Rosa to Windsor
 - Marin to Solano
 - Stockton to Sacramento & Merced
 - Lathrop to Dublin/Pleasanton
 - Downtown San Francisco - 4th & King to Salesforce Transit Center
 - To Western San Francisco (Geary to 19th Ave.)
 - To San Jose & Santa Clara
 - Monterey/Salinas to Gilroy
 - Pajaro to Santa Cruz
 - Dedicated tracks: Merced to Gilroy

- B New Markets & Enhanced Stations:**
- North Petaluma
 - New stations connecting Tri-Valley to Central Valley
 - Irvington Station
 - Enhanced Sacramento Valley Station, San Jose Diridon Station

- C Service Improvements:**
- Higher frequency - BART Tube
 - Two more round-trip trains - Central Valley for San Joaquins
 - More direct route - Oakland to Fremont & higher frequency Sacramento to Roseville for Capitol Corridor
 - Electrified fleet, higher frequency, faster service for Caltrain



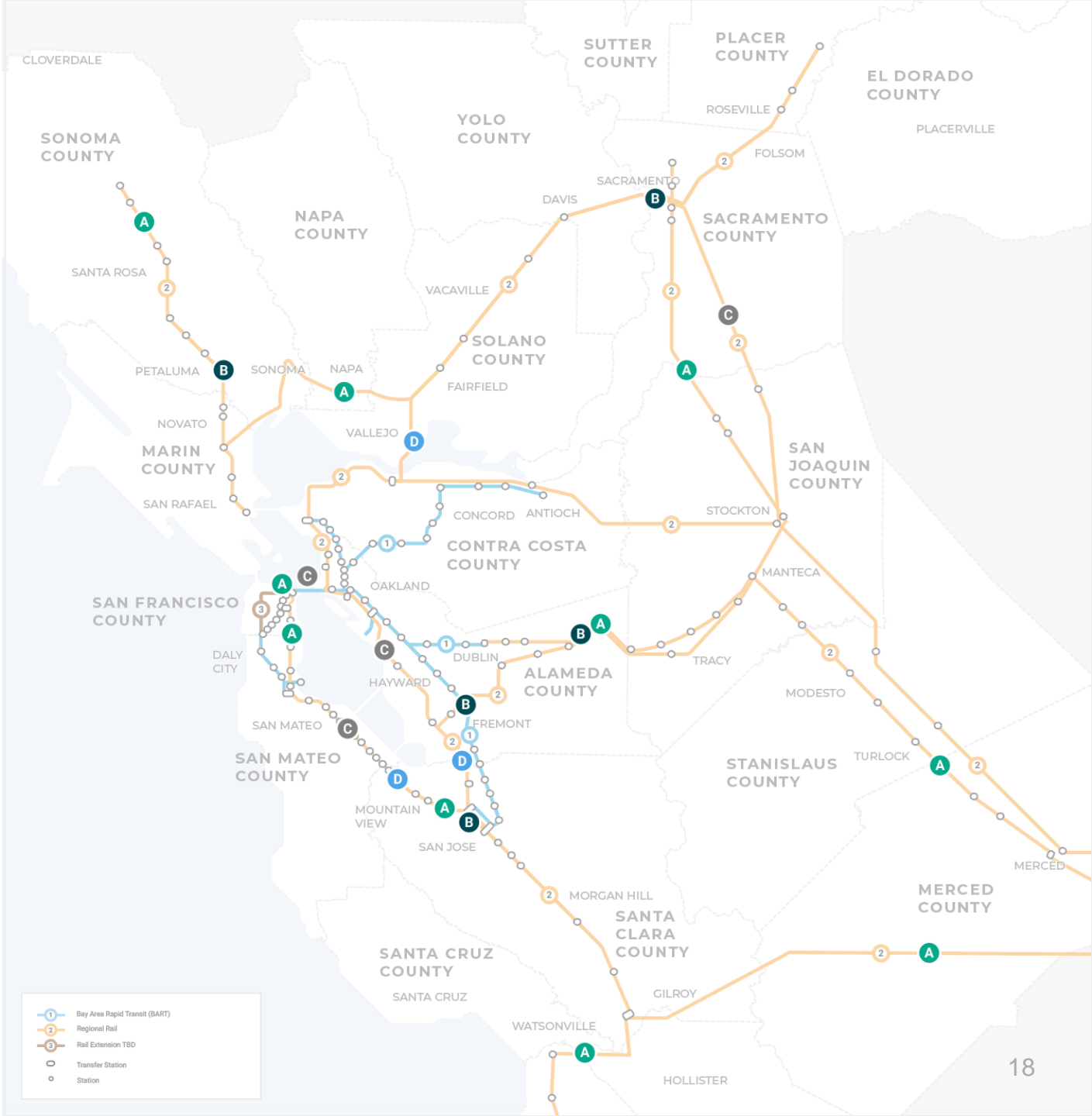
Planned & Potential Network Improvements

- A Rail Extensions:**
- North Santa Rosa to Windsor
 - Marin to Solano
 - Stockton to Sacramento & Merced
 - Lathrop to Dublin/Pleasanton
 - Downtown San Francisco - 4th & King to Salesforce Transit Center
 - To Western San Francisco (Geary to 19th Ave.)
 - To San Jose & Santa Clara
 - Monterey/Salinas to Gilroy
 - Pajaro to Santa Cruz
 - Dedicated tracks: Merced to Gilroy

- B New Markets & Enhanced Stations:**
- North Petaluma
 - New stations connecting Tri-Valley to Central Valley
 - Irvington Station
 - Enhanced Sacramento Valley Station, San Jose Diridon Station

- C Service Improvements:**
- Higher frequency - BART Tube
 - Two more round-trip trains - Central Valley for San Joaquins
 - More direct route - Oakland to Fremont & higher frequency Sacramento to Roseville for Capitol Corridor
 - Electrified fleet, higher frequency, faster service for Caltrain

- D Track Improvements (infrastructure): Studies**
- Benicia-Martinez Rail Bridge replacement for Capitol Corridor
 - Alviso double-tracking for Capitol Corridor
 - Planning some grade-separated tracks, signaling & automated train control in South Bay for High-Speed Rail



Link 21 Goals & Objectives

TRANSFORM THE PASSENGER EXPERIENCE

- Provide better service
- Improve reliability and system performance
- Build ridership and mode share



PROMOTE EQUITY AND LIVABILITY

- Connect people and places
- Improve safety, health, and air quality
- Advance equity and community stability



SUPPORT ECONOMIC OPPORTUNITY AND GLOBAL COMPETITIVENESS

- Improve access to opportunity and employment
- Connect major economic, research, and education centers
- Enable transit-supportive and equitable land use



ADVANCE ENVIRONMENTAL STEWARDSHIP AND PROTECTION

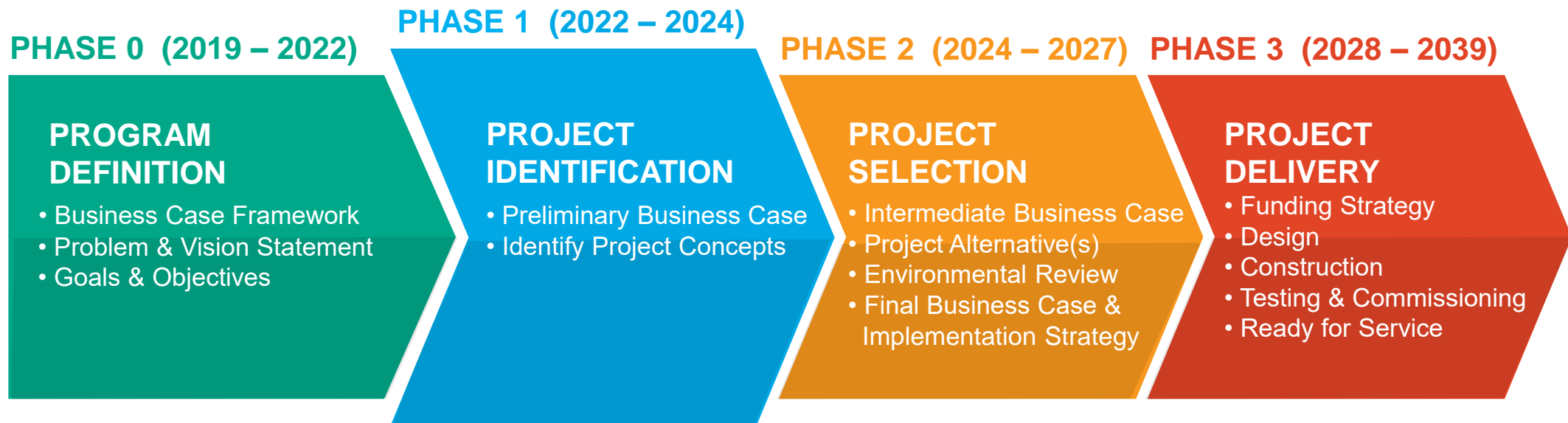
- Increase climate change resilience
- Reduce greenhouse gas emissions
- Conserve resources



A photograph of the interior of a public transit vehicle, likely a bus or light rail train. The scene is filled with passengers of various ages. In the foreground, a woman with blonde hair, wearing a green quilted jacket and a red scarf, is smiling and looking towards the left. She is holding onto a silver handrail. To her left, an older man with a grey beard and glasses, wearing a dark jacket and a maroon scarf, is also looking towards the left. In front of him, a younger man with grey hair and glasses, wearing a grey jacket, is looking towards the same direction. The background shows other passengers, including a woman with long dark hair and a man in a brown jacket. The lighting is bright, and the overall atmosphere is one of a busy, everyday commute.

Link21 Focused on Our Future **Part 2**

Link21 Program Timeline



Equity at Link21 Core

Equitable Engagement, Analysis, and Planning

- Direct and accessible engagement

Co-Creation

- Prioritizing communities that have been marginalized
- Partnering to understand needs and identify opportunities

Equity Advisory Council (EAC)

- Benefiting those who need it most



What We've Accomplished

PHASE 0 (2019 – 2022)

PHASE 1 (2022 – 2024)

PHASE 2 (2024 – 2028)

PHASE 3 (2029 – 2039)

PROGRAM DEFINITION

PROJECT IDENTIFICATION

PROJECT SELECTION

PROJECT DELIVERY

KEY WORK ACTIVITIES

- **Planning:** Early visioning, Program identification and decision framework
- **Engineering Analysis:** Market analysis, service survey, technical studies
- **Early Environmental Work:** Social and natural resource data collection
- **Public Engagement:** Co-creation and stakeholder / public workshops



Phase 1 Focus

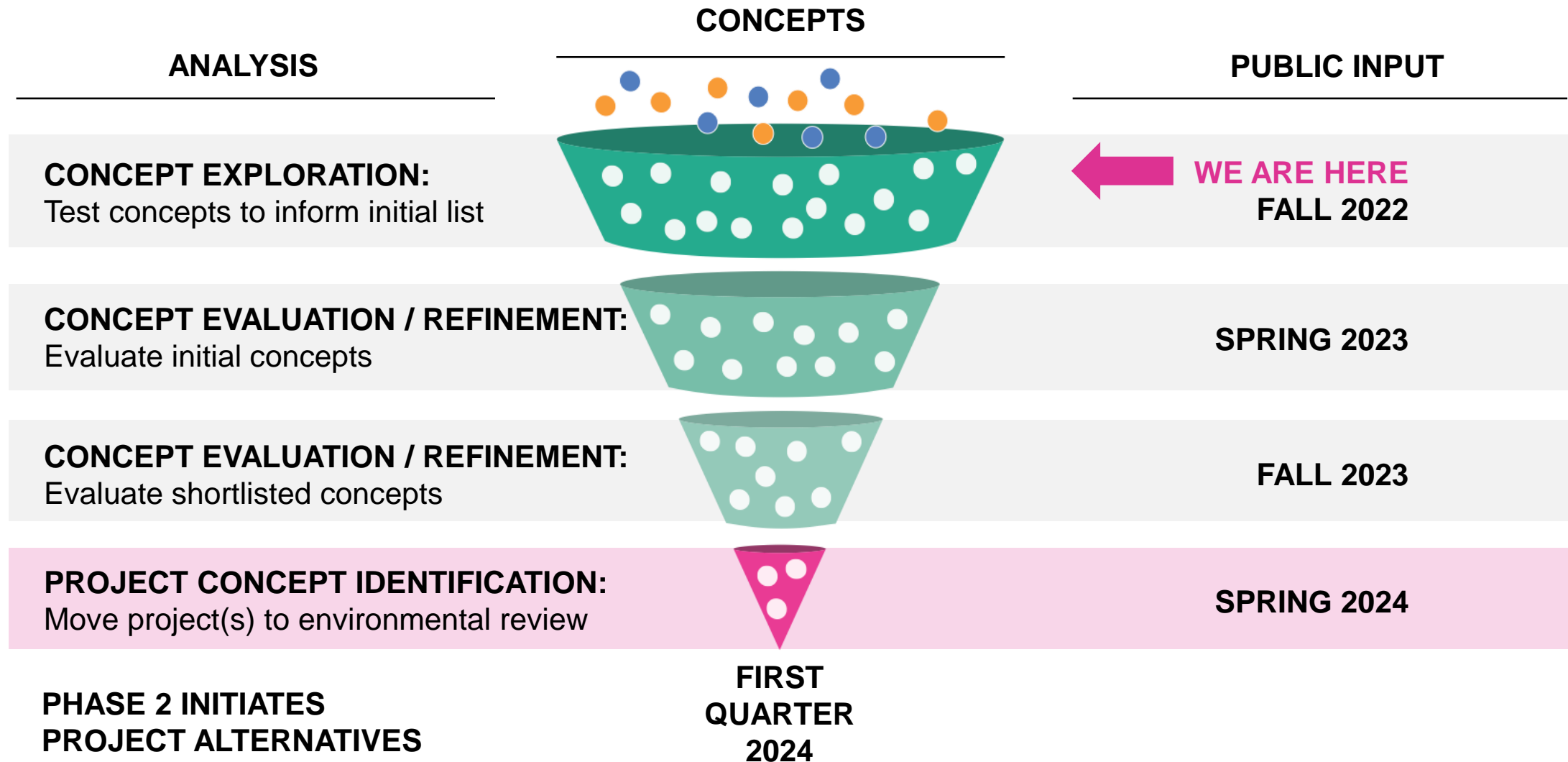


KEY WORK ACTIVITIES

- **Planning:** Concept identification, service planning & ridership modeling
- **Evaluation:** Concept testing, evaluation & initial screening
- **Engineering Feasibility:** Studies on concepts
- **Early Environmental Work:** Identification of constraints & opportunities
- **Public Engagement:** Ongoing equitable engagement through planning



Project Identification Process & Public Input



Integrated Environmental Focus

PHASE

1

Environmental Constraints
& Opportunities (ECO)
Identification

PROJECT IDENTIFICATION (2022 – 2024)

- Social and natural constraints and opportunities to support concept development
- ECO Report and map book available at Link21Program.org

PHASE

2

Comprehensive
Environmental
Analysis

PROJECT SELECTION (2024 – 2027)

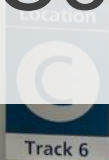
- ECO informs project alternatives
- California Environmental Quality Act (CEQA) & National Environmental Policy Agency (NEPA)



age Claim

s & Taxis

Developing Initial Concepts Part 3



Identifying Link21 Concepts

Concepts are built from **four key building blocks** to best serve riders



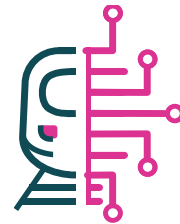
MARKETS

People, travel patterns, and their preferences



SERVICE

Schedule, travel time, and frequency



TECHNOLOGY

Types of trains

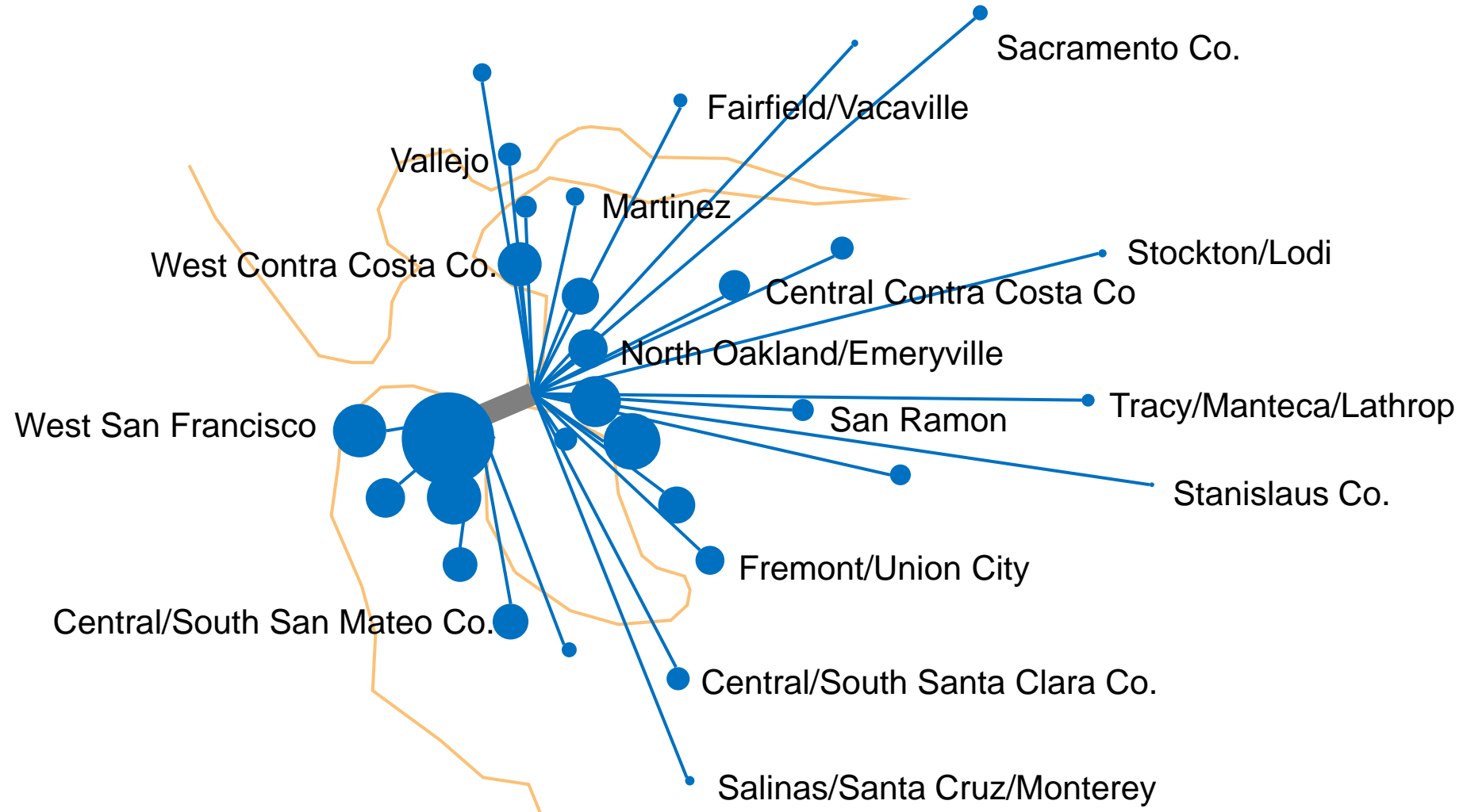


INFRASTRUCTURE

Physical improvements to train network

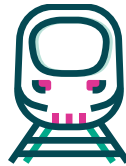


Transbay Rail Potential (Equity Weighted)



Link21: New Trains and Service

BART



MODERN REGIONAL RAIL URBAN METRO SERVICE



MODERN REGIONAL RAIL LONG DISTANCE SERVICE



FREQUENCY	More frequent trains Every 2-30 minutes (varies by route/time of day)	Similar to BART	Less frequent trains Every 30 minutes (varies by route/time of day)
STOPS	1-5 miles apart	Similar to BART	5+ miles apart (express service)
TRACK	Designated BART only	Shared with national network	Shared with national network
SERVICE AREA	Urban/Suburban Areas Within 5-County BART District	Urban/Metro areas	Urban/Suburban Centers Across 21-County Megaregion

NEW TRAIN TECHNOLOGY that is greener, lighter, and faster



Link21 Unlocks Travel Potential

Markets

- Better Megaregional connectivity

Service

- Improved travel, frequency with some one-seat rides, and faster transfer opportunities
- More capacity, service redundancy and reliability, between BART and Regional Rail

Technology

- Greener, lighter, and faster trains

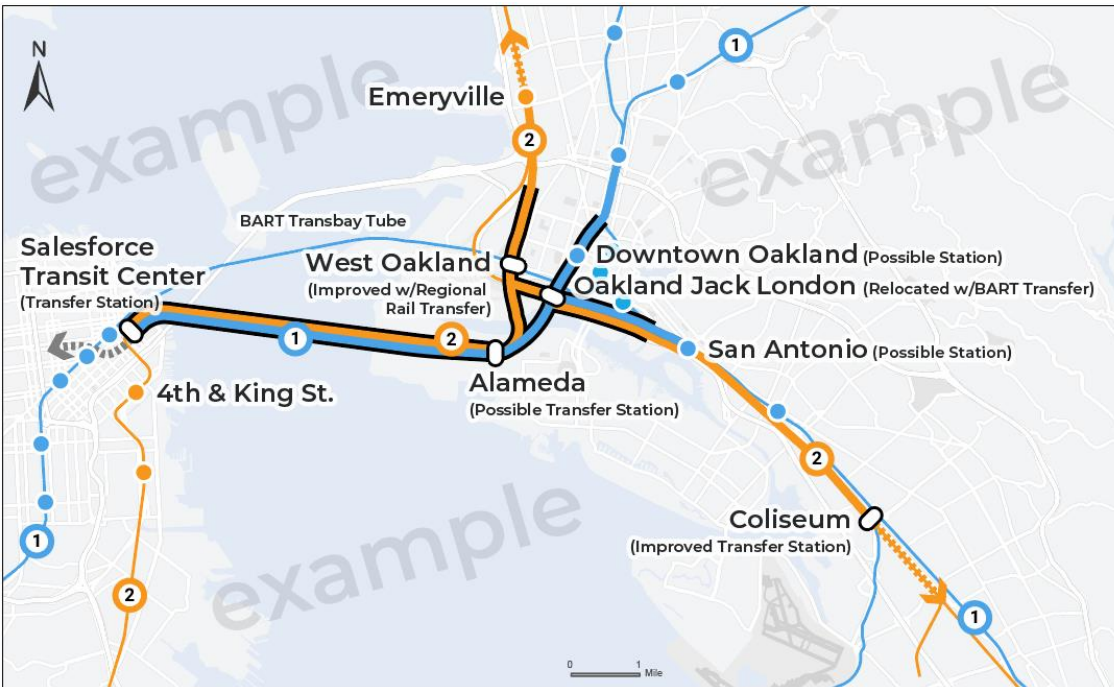
Infrastructure

- Enhanced tracks, signaling, structures, and facilities



Example Concepts: Regional Rail & BART in Crossing

ONE ALIGNMENT - TWO STRUCTURES



TWO ALIGNMENTS - TWO STRUCTURES



- Regional Rail Concept
- Regional Rail Concept (Tracks Underground)
- Regional Rail Concept (Possible Improvements)

- Stations**
- BART
 - Regional Rail
 - Transfer

- BART Concept
- BART Rail Concept (Tracks Underground)
- BART Rail Concept (Possible Extension)

- Existing and Planned**
- BART
 - Regional Rail

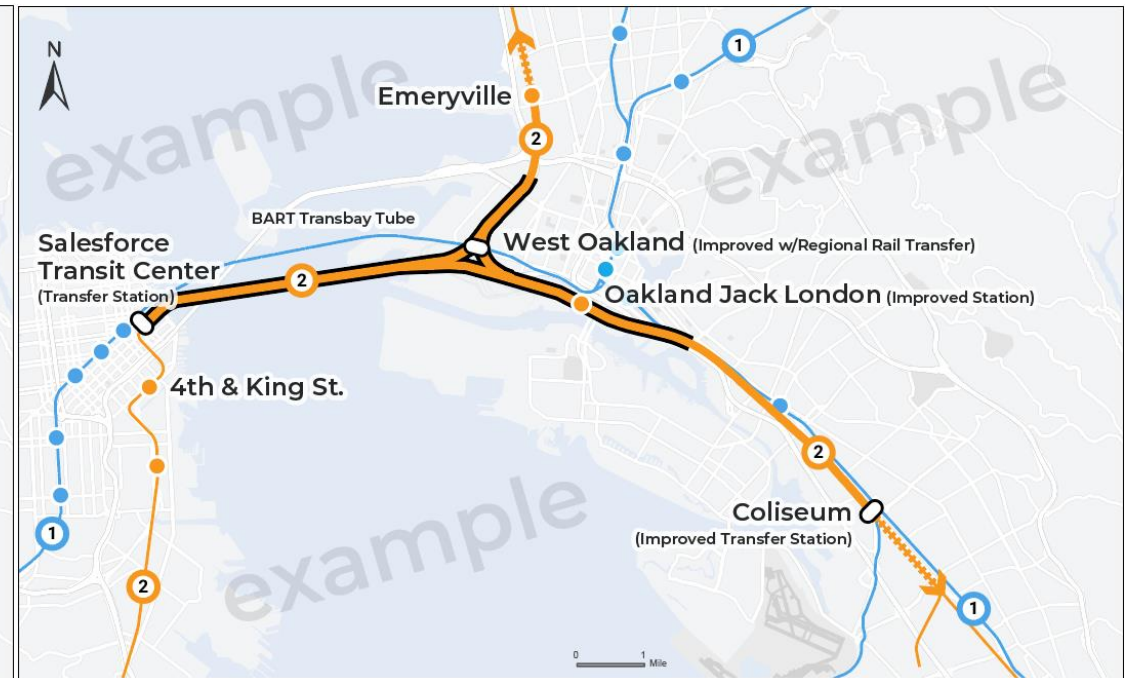


Example Concepts: Regional Rail in Crossing

ALAMEDA TO SALESFORCE TRANSIT CENTER



EMERYVILLE TO SALESFORCE TRANSIT CENTER



- Regional Rail Concept
- Regional Rail Concept (Tracks Underground)
- Regional Rail Concept (Possible Improvements)

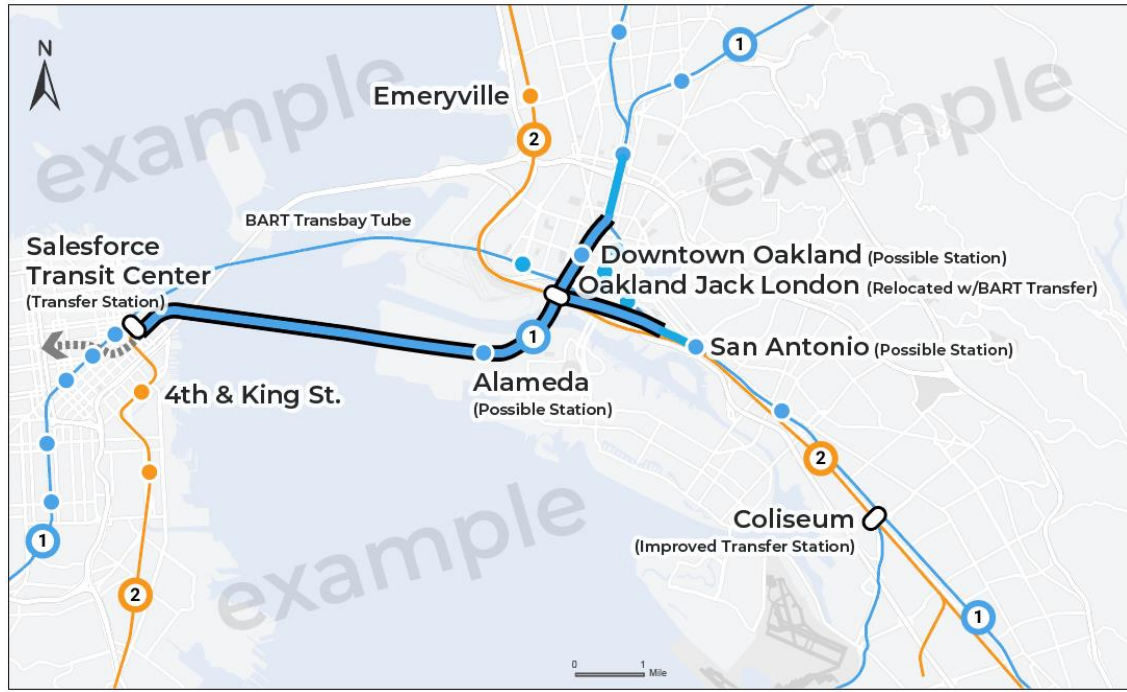
- Stations**
- BART
 - Regional Rail
 - Transfer

- Existing and Planned**
- BART
 - Regional Rail



Example Concepts: BART in Crossing

MACARTHUR TO MISSION



- ① BART Concept
- ▬ BART Rail Concept (Tracks Underground)
- ▬▬▬ BART Rail Concept (Possible Extension)

MACARTHUR TO MISSION BAY



- | | |
|--|---|
| Stations | Existing and Planned |
| ● BART | ① BART |
| ● Regional Rail | ② Regional Rail |
| ○ Transfer | |



Understanding Your Service Needs



Ways to Participate in Polling



Computer

www.pollev.com/kwpoll1
on internet browser



Smart Phone

www.pollev.com/kwpoll1
on internet browser



Text Message

Text **kwpoll1** to **22333**
on mobile device



QR Code

Scan QR Code from
mobile device camera
to access poll



Polling

QUESTION

3

Which train connections would you be most likely to use?
Select up to three

- Sacramento <--> San Francisco
- Sacramento <--> Peninsula, Silicon Valley, and San José
- Sacramento <--> Oakland, Alameda, and East Bay
- Stockton and Central Valley <--> San Francisco
- Stockton and Central Valley <--> Peninsula, Silicon Valley, and San José
- Stockton and Central Valley <--> Oakland, Alameda, and East Bay
- Santa-Cruz, Monterey, and Salinas <--> San Francisco
- Santa-Cruz, Monterey, and Salinas <--> Peninsula, Silicon Valley, and San José



Polling

QUESTION

4

If traveling by train, what types of trips would you be most likely to make?
Select up to three

- Commute to work
- Commute to school or college
- Get to business or medical appointments
- Get to the airport (SAC, SFO, OAK, SJC)
- Visit friends and family
- Entertainment such as concerts, sporting events, and festivals
- Other (please specify): _____



Polling

QUESTION

5

If you were to travel by train, what times would you most likely ride?
Select up to three

- Weekdays, rush hours (7am-10am and 4pm-7pm)
- Weekdays, midday (10am-4pm)
- Weekdays, night (7pm-1am)
- Weekdays, overnight (1am-7am)
- Weekends, mornings (7am-Noon)
- Weekends, afternoons (Noon-7pm)
- Weekends, night (7pm-1am)
- Weekends, overnight (1am-7am)





Engagement and Q&A Session **Part 4**

Fall Public Events

Virtual Community Meetings

Megaregional Overview

October 18, 2022: 5:30 – 7:00 p.m.

East Bay Focus

October 26, 2022: 5:30 – 7:00 p.m.

San Francisco Focus

November 16, 2022: 5:30 – 7:00 p.m.

Virtual Office Hours

October 19, 2022: Noon – 1:00 p.m.

October 24, 2022: 5:30 – 6:30 p.m.

October 27, 2022: 4:30 – 5:30 p.m.

November 17, 2022: 4:30 – 5:30 p.m.



Visit Link21Program.org/events for more details



Stay Engaged



SPEAKERS BUREAU & GRASSROOTS

Tabling at
rail stations and
in neighborhoods

855-905-Link (5465)



WEBSITE

Electronic sign-ups,
information library,
comments submittal

Link21Program.org



SOCIAL MEDIA

Follow BART and
CCJPA on Twitter,
Facebook, Instagram

[#Link21](https://twitter.com/Link21)



Question & Answer: How to Participate

WRITTEN OR VERBAL QUESTIONS

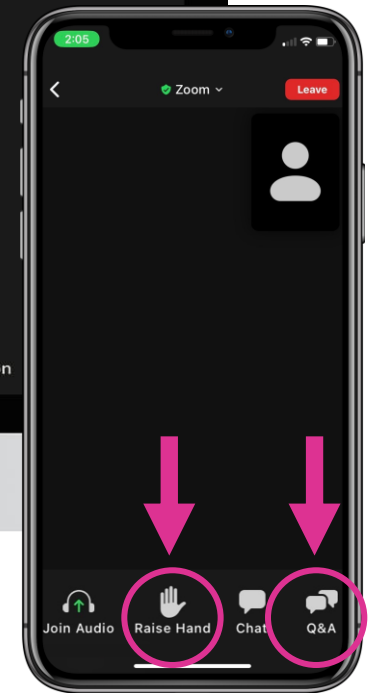
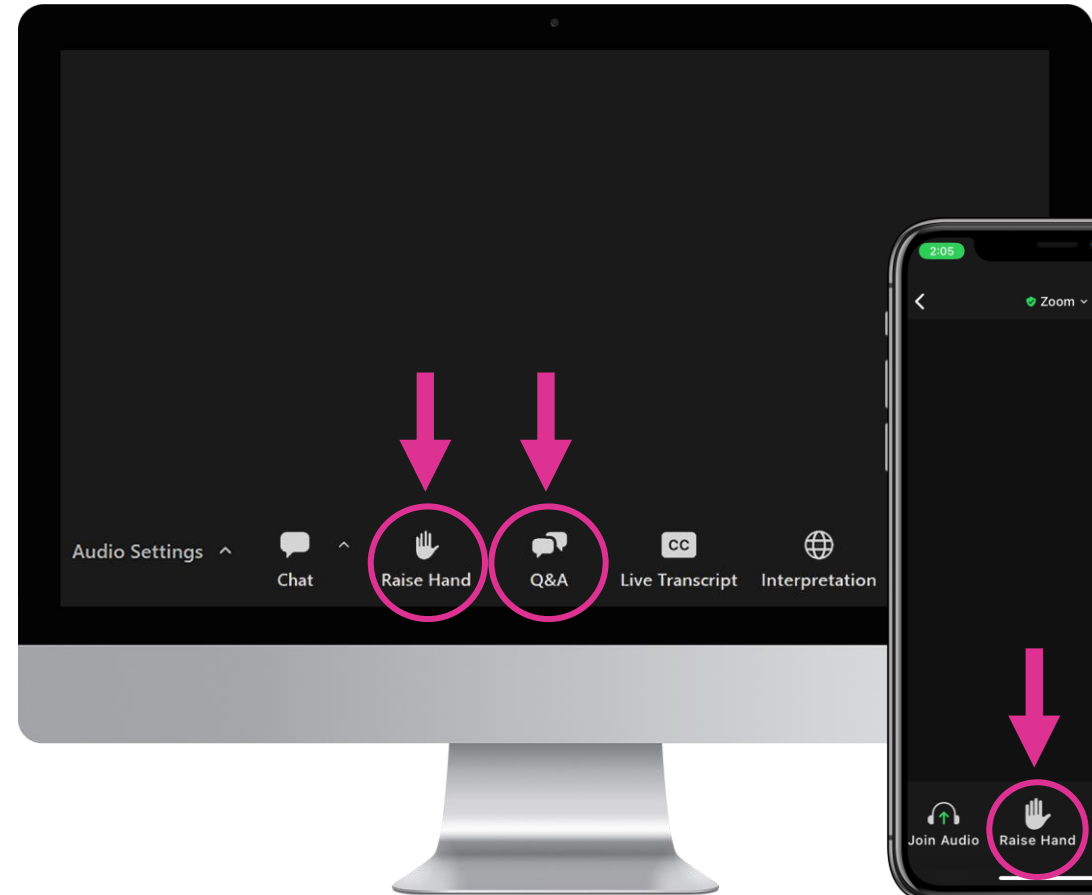
Zoom desktop or mobile app attendees

- Type your question, press the “Q&A” button in meeting control task bar
- Ask your question verbally, press the “raise hand” button in meeting control task bar

Dial-in attendees

- *7 raises or lowers your hand
- Phone Line Manager will unmute you to speak

Zoom desktop app/web browser



Zoom mobile app

